

## Product datasheet for **TA360418**

### hnRNP G (RBMX) Rabbit Polyclonal Antibody

#### Product data:

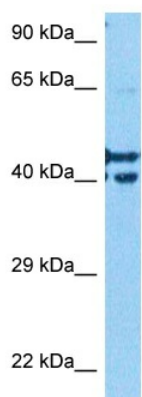
Product Type:	Primary Antibodies
Applications:	WB
Reactivity:	Human
Host:	Rabbit
Clonality:	Polyclonal
Immunogen:	The immunogen is a synthetic peptide directed towards the middle region of human RBMX
Specificity:	<b>Expected reactivity:</b> Human
Formulation:	Liquid. Purified antibody supplied in 1x PBS buffer with 0.09% (w/v) sodium azide and 2% sucrose.
Concentration:	lot specific
Purification:	Affinity purified
Conjugation:	Unconjugated
Storage:	For short term use, store at 2-8°C up to 1 week. For long term storage, store at -20°C in small aliquots to prevent freeze-thaw cycles.
Stability:	Shelf life: one year from despatch.
Predicted Protein Size:	391 kDa
Gene Name:	RNA binding motif protein, X-linked
Database Link:	<a href="#">NP_001158275.1</a> <a href="#">Entrez Gene 27316 Human</a> <a href="#">P38159</a>
Background:	This gene belongs to the RBMY gene family which includes candidate Y chromosome spermatogenesis genes. This gene, an active X chromosome homolog of the Y chromosome RBMY gene, is widely expressed whereas the RBMY gene evolved a male-specific function in spermatogenesis. Pseudogenes of this gene, found on chromosomes 1, 4, 9, 11, and 6, were likely derived by retrotransposition from the original gene. Alternatively spliced transcript variants encoding different isoforms have been identified. A snoRNA gene (SNORD61) is found in one of its introns.
Synonyms:	hnRNP-G; HNRPG; RBMXP1; RBMXRT; RNMX



[View online »](#)

Protein Pathways: Spliceosome

### Product images:



Host: Rabbit  
Target Name: RBMX  
Sample Type: PANC1 Cell Lysate  
Antibody Dilution: 1.0µg/ml

Host: Rabbit  
Target Name: RBMX  
Sample Tissue: PANC1 Whole Cell lysates  
Antibody Dilution: 1ug/ml