

## Product datasheet for **TA360412**

### STEAP1 Rabbit Polyclonal Antibody

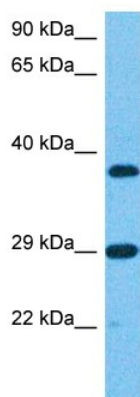
#### Product data:

|                         |  |
|-------------------------|--|
| Product Type:           | Primary Antibodies   |
| Applications:           | WB   |
| Reactivity:             | Human  |
| Host:                   | Rabbit   |
| Clonality:              | Polyclonal   |
| Immunogen:              | The immunogen is a synthetic peptide directed towards the N terminal region of human STEAP1  |
| Specificity:            | <b>Expected reactivity:</b> Human  |
| Formulation:            | Liquid. Purified antibody supplied in 1x PBS buffer with 0.09% (w/v) sodium azide and 2% sucrose.<br><i>Note that this product is shipped as lyophilized powder to China customers.</i>  |
| Concentration:          | lot specific   |
| Purification:           | Affinity purified  |
| Conjugation:            | Unconjugated   |
| Storage:                | For short term use, store at 2-8°C up to 1 week. For long term storage, store at -20°C in small aliquots to prevent freeze-thaw cycles.  |
| Stability:              | Shelf life: one year from despatch.  |
| Predicted Protein Size: | 40 kDa   |
| Gene Name:              | six transmembrane epithelial antigen of the prostate 1   |
| Database Link:          | <a href="#">NP_036581.1</a><br><a href="#">Entrez Gene 26872 Human</a><br><a href="#">Q9UHE8</a>   |
| Background:             | This gene is predominantly expressed in prostate tissue, and is found to be upregulated in multiple cancer cell lines. The gene product is predicted to be a six-transmembrane protein, and was shown to be a cell surface antigen significantly expressed at cell-cell junctions. |
| Synonyms:               | MGC19484; PRSS24; STEAP  |
| Protein Families:       | Transmembrane  |



[View online »](#)

## Product images:



Host: Rabbit  
Target Name: STEA1  
Sample Type: Jurkat Whole Cell Lysate  
Antibody Dilution: 1.0 $\mu$ g/ml

Host: Rabbit  
Target Name: STEAP1  
Sample Tissue: Human Jurkat Whole Cell  
Antibody Dilution: 1.0 $\mu$ g/ml