

Product datasheet for **TA360404**

TIAM2 Rabbit Polyclonal Antibody

Product data:

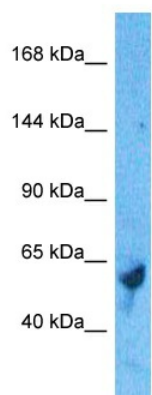
| | |
|-------------------------|---|
| Product Type: | Primary Antibodies |
| Applications: | WB |
| Reactivity: | Human |
| Host: | Rabbit |
| Clonality: | Polyclonal |
| Immunogen: | The immunogen is a synthetic peptide directed towards the middle region of human TIAM2 |
| Specificity: | Expected reactivity: Human |
| Formulation: | Liquid. Purified antibody supplied in 1x PBS buffer with 0.09% (w/v) sodium azide and 2% sucrose. |
| Concentration: | lot specific |
| Purification: | Affinity purified |
| Conjugation: | Unconjugated |
| Storage: | For short term use, store at 2-8°C up to 1 week. For long term storage, store at -20°C in small aliquots to prevent freeze-thaw cycles. |
| Stability: | Shelf life: one year from despatch. |
| Predicted Protein Size: | 190 kDa |
| Gene Name: | T-cell lymphoma invasion and metastasis 2 |
| Database Link: | NP_001010927.1 Entrez Gene 26230 Human Q8IVF5 |
| Background: | This gene encodes a guanine nucleotide exchange factor. A highly similar mouse protein specifically activates ras-related C3 botulinum substrate 1, converting this Rho-like guanosine triphosphatase (GTPase) from a guanosine diphosphate-bound inactive state to a guanosine triphosphate-bound active state. The encoded protein may play a role in neural cell development. Alternatively spliced transcript variants encoding different isoforms have been described. |
| Synonyms: | FLJ41865; KIAA2016; STEF; TIAM-2 |
| Protein Families: | Druggable Genome |



[View online »](#)

Protein Pathways: Chemokine signaling pathway, Regulation of actin cytoskeleton

Product images:



Host: Rabbit
Target Name: TIAM2
Sample Tissue: Stomach Tumor Lysate
Antibody Dilution: 1.0 μ g/ml

Host: Rabbit
Target Name: TIAM2
Sample Tissue: Human Stomach Tumor
Antibody Dilution: 1.0 μ g/ml