

Product datasheet for **TA360403**

SLITRK5 Rabbit Polyclonal Antibody

Product data:

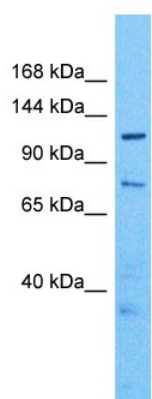
Product Type:	Primary Antibodies
Applications:	WB
Reactivity:	Human
Host:	Rabbit
Clonality:	Polyclonal
Immunogen:	The immunogen is a synthetic peptide directed towards the middle region of human SLITRK5
Specificity:	Expected reactivity: Human
Formulation:	Liquid. Purified antibody supplied in 1x PBS buffer with 0.09% (w/v) sodium azide and 2% sucrose. <i>Note that this product is shipped as lyophilized powder to China customers.</i>
Concentration:	lot specific
Purification:	Affinity purified
Conjugation:	Unconjugated
Storage:	For short term use, store at 2-8°C up to 1 week. For long term storage, store at -20°C in small aliquots to prevent freeze-thaw cycles.
Stability:	Shelf life: one year from despatch.
Predicted Protein Size:	107 kDa
Gene Name:	SLIT and NTRK like family member 5
Database Link:	NP_056382.1 Entrez Gene 26050 Human O94991
Background:	Members of the SLITRK family, such as SLITRK5, are integral membrane proteins with 2 N-terminal leucine-rich repeat (LRR) domains similar to those of SLIT proteins (see SLIT1; MIM 603742). Most SLITRKs, including SLITRK5, also have C-terminal regions that share homology with neurotrophin receptors (see NTRK1; MIM 191315). SLITRKs are expressed predominantly in neural tissues and have neurite-modulating activity (Aruga et al., 2003 [PubMed 14557068]).[supplied by OMIM, Mar 2008]
Synonyms:	bA364G4.2; FLJ58374; KIAA0918; LRRC11



[View online »](#)

Protein Families: Transmembrane

Product images:



Host: Rabbit
Target Name: SLIK5
Sample Type: Hela Whole Cell Lysate
Antibody Dilution: 1.0 μ g/ml

Host: Rabbit
Target Name: SLITRK5
Sample Tissue: Human Hela Whole Cell
Antibody Dilution: 1.0 μ g/ml