

Product datasheet for **TA360399**

SYT homolog 1 (SS18L1) Rabbit Polyclonal Antibody

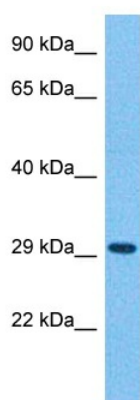
Product data:

Product Type:	Primary Antibodies
Applications:	WB
Reactivity:	Human
Host:	Rabbit
Clonality:	Polyclonal
Immunogen:	The immunogen is a synthetic peptide directed towards the middle region of human SS18L1
Specificity:	Expected reactivity: Human
Formulation:	Liquid. Purified antibody supplied in 1x PBS buffer with 0.09% (w/v) sodium azide and 2% sucrose. <i>Note that this product is shipped as lyophilized powder to China customers.</i>
Concentration:	lot specific
Purification:	Affinity purified
Conjugation:	Unconjugated
Storage:	For short term use, store at 2-8°C up to 1 week. For long term storage, store at -20°C in small aliquots to prevent freeze-thaw cycles.
Stability:	Shelf life: one year from despatch.
Predicted Protein Size:	43 kDa
Gene Name:	SS18L1, nBAF chromatin remodeling complex subunit
Database Link:	NP_001288707.1 Entrez Gene 26039 Human O75177
Background:	This gene encodes a calcium-responsive transactivator which is an essential subunit of a neuron-specific chromatin-remodeling complex. The structure of this gene is similar to that of the SS18 gene. Mutations in this gene are involved in amyotrophic lateral sclerosis (ALS). Alternatively spliced transcript variants have been found for this gene.
Synonyms:	CREST; KIAA0693; LP2261; MGC26711; MGC78386



[View online »](#)

Product images:



Host: Rabbit
Target Name: SS18L1
Sample Tissue: MCF7 Cell Lysate
Antibody Dilution: 1.0 μ g/ml

Host: Rabbit
Target Name: SS18L1
Sample Tissue: Human MCF7 Whole Cell
Antibody Dilution: 1.0ug/ml