

## Product datasheet for **TA360398**

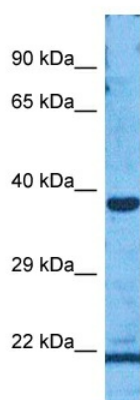
### **RNF167 Rabbit Polyclonal Antibody**

#### **Product data:**

Product Type:	Primary Antibodies
Applications:	WB
Reactivity:	Human
Host:	Rabbit
Clonality:	Polyclonal
Immunogen:	The immunogen is a synthetic peptide directed towards the middle region of human RNF167
Specificity:	<b>Expected reactivity:</b> Human
Formulation:	Liquid. Purified antibody supplied in 1x PBS buffer with 0.09% (w/v) sodium azide and 2% sucrose.
Concentration:	lot specific
Purification:	Affinity purified
Conjugation:	Unconjugated
Storage:	For short term use, store at 2-8°C up to 1 week. For long term storage, store at -20°C in small aliquots to prevent freeze-thaw cycles.
Stability:	Shelf life: one year from despatch.
Predicted Protein Size:	38 kDa
Gene Name:	ring finger protein 167
Database Link:	<a href="#">NP_056343.1</a> <a href="#">Entrez Gene 26001 Human</a> <a href="#">Q9H6Y7</a>
Background:	RNF167 is an E3 ubiquitin ligase that interacts with TSSC5 (SLC22A18; MIM 602631) and, together with UBE2E1 (UBE2E1; MIM 602916), facilitates TSSC5 polyubiquitylation (Yamada and Gorbsky, 2006 [PubMed 16314844]).[supplied by OMIM, Mar 2008]
Synonyms:	5730408C10Rik; DKFZp566H073; LP2254; RING105



[View online »](#)

**Product images:**


Host: Rabbit  
 Target Name: RNF167  
 Sample Type: DLD1 Whole Cell Lysate  
 Antibody Dilution: 1.0µg/ml

Host: Rabbit  
 Target Name: RNF167  
 Sample Tissue: Human DLD1 Whole Cell  
 Antibody Dilution: 1.0ug/ml