

## Product datasheet for **TA360388**

### **Cbl c (CBLC) Rabbit Polyclonal Antibody**

#### **Product data:**

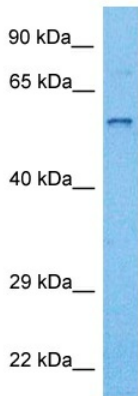
Product Type:	Primary Antibodies
Applications:	WB
Reactivity:	Human
Host:	Rabbit
Clonality:	Polyclonal
Immunogen:	The immunogen is a synthetic peptide directed towards the C terminal region of human CBLC
Specificity:	<b>Expected reactivity:</b> Human
Formulation:	Liquid. Purified antibody supplied in 1x PBS buffer with 0.09% (w/v) sodium azide and 2% sucrose. <i>Note that this product is shipped as lyophilized powder to China customers.</i>
Concentration:	lot specific
Purification:	Affinity purified
Conjugation:	Unconjugated
Storage:	For short term use, store at 2-8°C up to 1 week. For long term storage, store at -20°C in small aliquots to prevent freeze-thaw cycles.
Stability:	Shelf life: one year from despatch.
Predicted Protein Size:	52 kDa
Gene Name:	Cbl proto-oncogene C
Database Link:	<a href="#">NP_001124324.1</a> <a href="#">Entrez Gene 23624 Human</a> <a href="#">Q9ULV8</a>
Background:	This gene encodes a member of the Cbl family of E3 ubiquitin ligases. Cbl proteins play important roles in cell signaling through the ubiquitination and subsequent downregulation of tyrosine kinases. Expression of this gene may be restricted to epithelial cells, and alternatively spliced transcript variants encoding multiple isoforms have been observed for this gene.
Synonyms:	CBL-3; CBL-SL; CBL3; RNF57
Protein Families:	Druggable Genome



[View online »](#)

**Protein Pathways:** Chronic myeloid leukemia, Endocytosis, ErbB signaling pathway, Insulin signaling pathway, Jak-STAT signaling pathway, Pathways in cancer, T cell receptor signaling pathway, Ubiquitin mediated proteolysis

### Product images:



Host: Rabbit  
Target Name: CBLC  
Sample Type: 293T Whole Cell Lysate  
Antibody Dilution: 1.0 $\mu$ g/ml

Host: Rabbit  
Target Name: CBLC  
Sample Tissue: Human 293T Whole Cell  
Antibody Dilution: 1.0 $\mu$ g/ml