

Product datasheet for **TA360383**

KLHL18 Rabbit Polyclonal Antibody

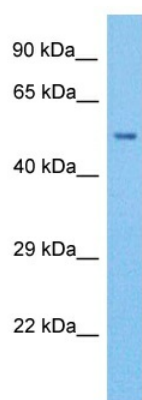
Product data:

Product Type:	Primary Antibodies
Applications:	WB
Reactivity:	Human
Host:	Rabbit
Clonality:	Polyclonal
Immunogen:	The immunogen is a synthetic peptide directed towards the middle region of human KLHL18
Specificity:	Expected reactivity: Human
Formulation:	Liquid. Purified antibody supplied in 1x PBS buffer with 0.09% (w/v) sodium azide and 2% sucrose. <i>Note that this product is shipped as lyophilized powder to China customers.</i>
Concentration:	lot specific
Purification:	Affinity purified
Conjugation:	Unconjugated
Storage:	For short term use, store at 2-8°C up to 1 week. For long term storage, store at -20°C in small aliquots to prevent freeze-thaw cycles.
Stability:	Shelf life: one year from despatch.
Predicted Protein Size:	64 kDa
Gene Name:	kelch like family member 18
Database Link:	NP_079286.2 Entrez Gene 23276 Human O94889
Synonyms:	FLJ13703; FLJ61265; KIAA0795



[View online »](#)

Product images:



Host: Rabbit
Target Name: KLHL18
Sample Type: Jurkat Whole Cell Lysate
Antibody Dilution: 1.0µg/ml

Host: Rabbit
Target Name: KLHL18
Sample Tissue: Human Jurkat Whole Cell
Antibody Dilution: 1.0ug/ml