

Product datasheet for **TA360381**

ISCU Rabbit Polyclonal Antibody

Product data:

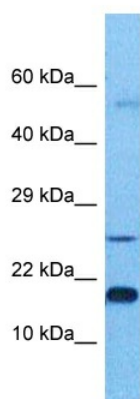
Product Type:	Primary Antibodies
Applications:	WB
Reactivity:	Human
Host:	Rabbit
Clonality:	Polyclonal
Immunogen:	The immunogen is a synthetic peptide directed towards the middle region of human ISCU
Specificity:	Expected reactivity: Human
Formulation:	Liquid. Purified antibody supplied in 1x PBS buffer with 0.09% (w/v) sodium azide and 2% sucrose. <i>Note that this product is shipped as lyophilized powder to China customers.</i>
Concentration:	lot specific
Purification:	Affinity purified
Conjugation:	Unconjugated
Storage:	For short term use, store at 2-8°C up to 1 week. For long term storage, store at -20°C in small aliquots to prevent freeze-thaw cycles.
Stability:	Shelf life: one year from despatch.
Predicted Protein Size:	18 kDa
Gene Name:	iron-sulfur cluster assembly enzyme
Database Link:	NP_055116.1 Entrez Gene 23479 Human Q9H1K1
Background:	Iron-sulfur (Fe-S) clusters are necessary for several mitochondrial enzymes and other subcellular compartment proteins. They contain sulfur and iron, and are created via several steps that include cysteine desulfurases, iron donors, chaperones, and scaffold proteins. This gene encodes the two isomeric forms, ISCU1 and ISCU2, of the Fe-S cluster scaffold protein. Mutations in this gene have been found in patients with myopathy with severe exercise intolerance and myoglobinuria. A pseudogene of this gene is present on chromosome 1. Alternative splicing results in multiple transcript variants encoding different isoforms.



[View online »](#)

Synonyms: 2310020H20Rik; HML; hnifU; ISU2; MGC74517; NIFU; NIFUN

Product images:



Host: Rabbit
Target Name: ISCU
Sample Tissue: Ovary Tumor Lysate
Antibody Dilution: 1.0 μ g/ml

Host: Rabbit
Target Name: ISCU
Sample Tissue: Human Ovary Tumor
Antibody Dilution: 1.0 μ g/ml