

## Product datasheet for **TA360377**

### ACSL6 Rabbit Polyclonal Antibody

#### Product data:

Product Type:	Primary Antibodies
Applications:	WB
Reactivity:	Human
Host:	Rabbit
Clonality:	Polyclonal
Immunogen:	The immunogen is a synthetic peptide directed towards the middle region of human ACSL6
Specificity:	<b>Expected reactivity:</b> Human
Formulation:	Liquid. Purified antibody supplied in 1x PBS buffer with 0.09% (w/v) sodium azide and 2% sucrose. <i>Note that this product is shipped as lyophilized powder to China customers.</i>
Concentration:	lot specific
Purification:	Affinity purified
Conjugation:	Unconjugated
Storage:	For short term use, store at 2-8°C up to 1 week. For long term storage, store at -20°C in small aliquots to prevent freeze-thaw cycles.
Stability:	Shelf life: one year from despatch.
Predicted Protein Size:	81 kDa
Gene Name:	acyl-CoA synthetase long-chain family member 6
Database Link:	<a href="#">NP_001009185.1</a> <a href="#">Entrez Gene 23305 Human</a> <a href="#">Q9UKU0</a>
Background:	The protein encoded by this gene catalyzes the formation of acyl-CoA from fatty acids, ATP, and CoA, using magnesium as a cofactor. The encoded protein plays a major role in fatty acid metabolism in the brain. Translocations with the ETV6 gene are causes of myelodysplastic syndrome with basophilia, acute myelogenous leukemia with eosinophilia, and acute eosinophilic leukemia. Several transcript variants encoding different isoforms have been found for this gene.
Synonyms:	ACS2; FAFL6; FLJ16173; KIAA0837; LACS2; LACS5

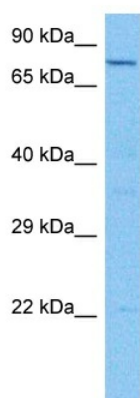


[View online »](#)

**Protein Families:** Druggable Genome, Transmembrane

**Protein Pathways:** Adipocytokine signaling pathway, Fatty acid metabolism, Metabolic pathways, PPAR signaling pathway

### Product images:



Host: Rabbit  
Target Name: ACSL6  
Sample Type: THP-1 Cell Lysate  
Antibody Dilution: 1.0 $\mu$ g/ml

Host: Rabbit  
Target Name: ACSL6  
Sample Tissue: Human THP-1 Whole Cell  
Antibody Dilution: 1.0 $\mu$ g/ml