

Product datasheet for **TA360376**

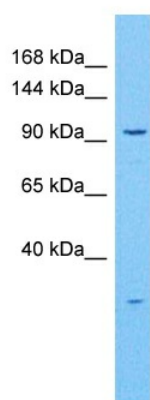
DIP2A Rabbit Polyclonal Antibody

Product data:

Product Type:	Primary Antibodies
Applications:	WB
Reactivity:	Human
Host:	Rabbit
Clonality:	Polyclonal
Immunogen:	The immunogen is a synthetic peptide directed towards the N terminal region of human DIP2A
Specificity:	Expected reactivity: Human
Formulation:	Liquid. Purified antibody supplied in 1x PBS buffer with 0.09% (w/v) sodium azide and 2% sucrose.
Concentration:	lot specific
Purification:	Affinity purified
Conjugation:	Unconjugated
Storage:	For short term use, store at 2-8°C up to 1 week. For long term storage, store at -20°C in small aliquots to prevent freeze-thaw cycles.
Stability:	Shelf life: one year from despatch.
Predicted Protein Size:	170 kDa
Gene Name:	disco interacting protein 2 homolog A
Database Link:	NP_001139587.1 Entrez Gene 23181 Human Q14689
Background:	The protein encoded by this gene may be involved in axon patterning in the central nervous system. This gene is not highly expressed. Several transcript variants encoding different isoforms have been found for this gene.
Synonyms:	C21orf106; Dip2; KIAA0184



[View online »](#)

Product images:

Host: Rabbit
Target Name: DIP2A
Sample Type: THP-1 Cell Lysate
Antibody Dilution: 1.0 μ g/ml

Host: Rabbit
Target Name: DIP2A
Sample Tissue: Human THP-1 Whole Cell
Antibody Dilution: 1.0 μ g/ml