

Product datasheet for **TA360374**

Selenophosphate synthetase 2 (SEPHS2) Rabbit Polyclonal Antibody

Product data:

Product Type:	Primary Antibodies
Applications:	WB
Reactivity:	Human
Host:	Rabbit
Clonality:	Polyclonal
Immunogen:	The immunogen is a synthetic peptide directed towards the middle region of human SEPHS2
Specificity:	Expected reactivity: Human
Formulation:	Liquid. Purified antibody supplied in 1x PBS buffer with 0.09% (w/v) sodium azide and 2% sucrose. <i>Note that this product is shipped as lyophilized powder to China customers.</i>
Concentration:	lot specific
Purification:	Affinity purified
Conjugation:	Unconjugated
Storage:	For short term use, store at 2-8°C up to 1 week. For long term storage, store at -20°C in small aliquots to prevent freeze-thaw cycles.
Stability:	Shelf life: one year from despatch.
Predicted Protein Size:	47 kDa
Gene Name:	selenophosphate synthetase 2
Database Link:	NP_036380.2 Entrez Gene 22928 Human Q99611
Background:	This gene encodes an enzyme that synthesizes selenophosphate from selenide and ATP. Selenophosphate is the selenium donor used to synthesize selenocysteine, which is co-translationally incorporated into selenoproteins at in-frame UGA codons. Genes encoding selenocysteine contain a stem-loop secondary structure in their 3' UTR called a selenocysteine insertion sequence (SECIS) element. The protein encoded by this gene contains a selenocysteine residue in its predicted active site. There is a pseudogene for this gene on chromosome 5.

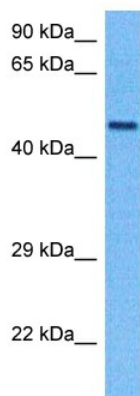


[View online »](#)

Synonyms: SPS2

Protein Pathways: Metabolic pathways, Selenoamino acid metabolism

Product images:



Host: Rabbit
Target Name: SPS2
Sample Tissue: Hela Cell Lysate
Antibody Dilution: 1.0 μ g/ml

Host: Rabbit
Target Name: SEPHS2
Sample Tissue: Human Hela Whole Cell
Antibody Dilution: 1.0 μ g/ml