

## Product datasheet for **TA360367**

### **EB3 (MAPRE3) Rabbit Polyclonal Antibody**

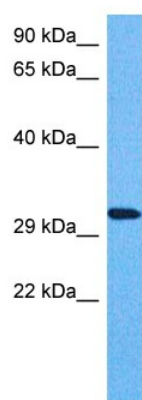
#### **Product data:**

Product Type:	Primary Antibodies
Applications:	WB
Reactivity:	Human
Host:	Rabbit
Clonality:	Polyclonal
Immunogen:	The immunogen is a synthetic peptide directed towards the middle region of human MAPRE3
Specificity:	<b>Expected reactivity:</b> Human
Formulation:	Liquid. Purified antibody supplied in 1x PBS buffer with 0.09% (w/v) sodium azide and 2% sucrose. <i>Note that this product is shipped as lyophilized powder to China customers.</i>
Concentration:	lot specific
Purification:	Affinity purified
Conjugation:	Unconjugated
Storage:	For short term use, store at 2-8°C up to 1 week. For long term storage, store at -20°C in small aliquots to prevent freeze-thaw cycles.
Stability:	Shelf life: one year from despatch.
Predicted Protein Size:	32 kDa
Gene Name:	microtubule associated protein RP/EB family member 3
Database Link:	<a href="#">NP_001289979.1</a> <a href="#">Entrez Gene 22924 Human</a> <a href="#">Q9UPY8</a>
Background:	The protein encoded by this gene is a member of the RP/EB family of genes. The protein localizes to the cytoplasmic microtubule network and binds APCL, a homolog of the adenomatous polyposis coli tumor suppressor gene.
Synonyms:	EB3; EBF3; EBF3-S; RP3



[View online »](#)

## Product images:



Host: Rabbit  
Target Name: MARE3  
Sample Tissue: Stomach Tumor Lysate  
Antibody Dilution: 1.0 $\mu$ g/ml

Host: Rabbit  
Target Name: MAPRE3  
Sample Tissue: Human Stomach Tumor  
Antibody Dilution: 1.0ug/ml