

Product datasheet for **TA360359**

Trex1 Rabbit Polyclonal Antibody

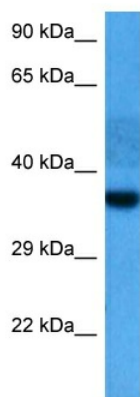
Product data:

Product Type:	Primary Antibodies
Applications:	WB
Reactivity:	Mouse
Host:	Rabbit
Clonality:	Polyclonal
Immunogen:	The immunogen is a synthetic peptide directed towards the middle region of human TREX1
Specificity:	Expected reactivity: Mouse
Formulation:	Liquid. Purified antibody supplied in 1x PBS buffer with 0.09% (w/v) sodium azide and 2% sucrose. <i>Note that this product is shipped as lyophilized powder to China customers.</i>
Concentration:	lot specific
Purification:	Affinity purified
Conjugation:	Unconjugated
Storage:	For short term use, store at 2-8°C up to 1 week. For long term storage, store at -20°C in small aliquots to prevent freeze-thaw cycles.
Stability:	Shelf life: one year from despatch.
Predicted Protein Size:	35 kDa
Gene Name:	three prime repair exonuclease 1
Database Link:	NP_001012236.1 Entrez Gene 22040 Mouse Q91XB0
Synonyms:	AGS1; CRV; DKFZp434J0310; DRN3; HERN3; OTTHUMP00000164813; OTTHUMP00000210132



[View online »](#)

Product images:



Host: Rabbit
Target Name: Trex1
Sample Type: Mouse Liver Lysate
Antibody Dilution: 1.0 μ g/ml

Host: Rabbit
Target Name: Trex1
Sample Tissue: Mouse Liver lysates
Antibody Dilution: 1.0 μ g/ml