

## Product datasheet for **TA360341**

### AHCYL1 Rabbit Polyclonal Antibody

#### Product data:

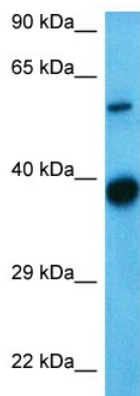
Product Type:	Primary Antibodies
Applications:	WB
Reactivity:	Human
Host:	Rabbit
Clonality:	Polyclonal
Immunogen:	The immunogen is a synthetic peptide directed towards the middle region of human AHCYL1
Specificity:	<b>Expected reactivity:</b> Human
Formulation:	Liquid. Purified antibody supplied in 1x PBS buffer with 0.09% (w/v) sodium azide and 2% sucrose. <i>Note that this product is shipped as lyophilized powder to China customers.</i>
Concentration:	lot specific
Purification:	Affinity purified
Conjugation:	Unconjugated
Storage:	For short term use, store at 2-8°C up to 1 week. For long term storage, store at -20°C in small aliquots to prevent freeze-thaw cycles.
Stability:	Shelf life: one year from despatch.
Predicted Protein Size:	59 kDa
Gene Name:	adenosylhomocysteinase like 1
Database Link:	<a href="#">NP_001229602.1</a> <a href="#">Entrez Gene 10768 Human</a> <a href="#">O43865</a>
Background:	The protein encoded by this gene interacts with inositol 1,4,5-trisphosphate receptor, type 1 and may be involved in the conversion of S-adenosyl-L-homocysteine to L-homocysteine and adenosine. Several transcript variants encoding two different isoforms have been found for this gene.
Synonyms:	DCAL; IRBIT; PRO0233; XPVKONA
Protein Families:	Druggable Genome



[View online »](#)

Protein Pathways: Cysteine and methionine metabolism, Metabolic pathways, Selenoamino acid metabolism

### Product images:



Host: Rabbit  
Target Name: SAHH2  
Sample Tissue: Ovary Tumor Lysate  
Antibody Dilution: 2.0 $\mu$ g/ml

Host: Rabbit  
Target Name: AHCYL1  
Sample Tissue: Human Ovary Tumor  
Antibody Dilution: 1.0 $\mu$ g/ml