

## Product datasheet for **TA360324**

### **RASA4 Rabbit Polyclonal Antibody**

#### **Product data:**

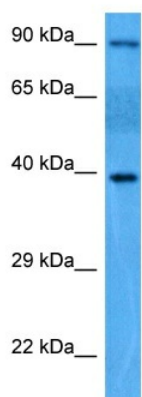
Product Type:	Primary Antibodies
Applications:	WB
Reactivity:	Human
Host:	Rabbit
Clonality:	Polyclonal
Immunogen:	The immunogen is a synthetic peptide directed towards the middle region of human RASA4
Specificity:	<b>Expected reactivity:</b> Human
Formulation:	Liquid. Purified antibody supplied in 1x PBS buffer with 0.09% (w/v) sodium azide and 2% sucrose.
Concentration:	lot specific
Purification:	Affinity purified
Conjugation:	Unconjugated
Storage:	For short term use, store at 2-8°C up to 1 week. For long term storage, store at -20°C in small aliquots to prevent freeze-thaw cycles.
Stability:	Shelf life: one year from despatch.
Predicted Protein Size:	88 kDa
Gene Name:	RAS p21 protein activator 4
Database Link:	<a href="#">NP_001073346.2</a> <a href="#">Entrez Gene 10156 Human</a> <a href="#">O43374</a>
Background:	This gene encodes a member of the GAP1 family of GTPase-activating proteins that suppresses the Ras/mitogen-activated protein kinase pathway in response to Ca(2+). Stimuli that increase intracellular Ca(2+) levels result in the translocation of this protein to the plasma membrane, where it activates Ras GTPase activity. Consequently, Ras is converted from the active GTP-bound state to the inactive GDP-bound state and no longer activates downstream pathways that regulate gene expression, cell growth, and differentiation. Multiple transcript variants encoding different isoforms have been found for this gene.
Synonyms:	CAPRI; FLJ59070; GAPL; KIAA0538; MGC131890



[View online »](#)

Protein Families: Druggable Genome

### Product images:



Host: Rabbit  
Target Name: RASA4  
Sample Type: Mesenchymoma Tumor Lysate  
Antibody Dilution: 1.0 $\mu$ g/ml

Host: Rabbit  
Target Name: RASA4  
Sample Tissue: Mesenchymoma lysates  
Antibody Dilution: 1 $\mu$ g/ml