

Product datasheet for **TA360322**

ACTR1A Rabbit Polyclonal Antibody

Product data:

Product Type:	Primary Antibodies
Applications:	WB
Reactivity:	Human
Host:	Rabbit
Clonality:	Polyclonal
Immunogen:	The immunogen is a synthetic peptide directed towards the middle region of human ACTR1A
Specificity:	Expected reactivity: Human
Formulation:	Liquid. Purified antibody supplied in 1x PBS buffer with 0.09% (w/v) sodium azide and 2% sucrose. <i>Note that this product is shipped as lyophilized powder to China customers.</i>
Concentration:	lot specific
Purification:	Affinity purified
Conjugation:	Unconjugated
Storage:	For short term use, store at 2-8°C up to 1 week. For long term storage, store at -20°C in small aliquots to prevent freeze-thaw cycles.
Stability:	Shelf life: one year from despatch.
Predicted Protein Size:	43 kDa
Gene Name:	ARP1 actin-related protein 1 homolog A, centractin alpha
Database Link:	NP_005727.1 Entrez Gene 10121 Human P61163



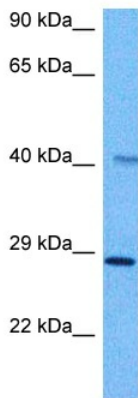
[View online »](#)

Background:

This gene encodes a 42.6 kD subunit of dynactin, a macromolecular complex consisting of 10-11 subunits ranging in size from 22 to 150 kD. Dynactin binds to both microtubules and cytoplasmic dynein. It is involved in a diverse array of cellular functions, including ER-to-Golgi transport, the centripetal movement of lysosomes and endosomes, spindle formation, chromosome movement, nuclear positioning, and axonogenesis. This subunit is present in 8-13 copies per dynactin molecule, and is the most abundant molecule in the dynactin complex. It is an actin-related protein, and is approximately 60% identical at the amino acid level to conventional actin.

Synonyms:

actin-RPV; ARP1; Centractin; CTRN1; FLJ52695; FLJ52800; FLJ55002

Product images:

Host: Rabbit
Target Name: ACTZ
Sample Tissue: Stomach Tumor Lysate
Antibody Dilution: 1.0µg/ml

Host: Rabbit
Target Name: ACTR1A
Sample Tissue: Human Stomach Tumor
Antibody Dilution: 1.0ug/ml