

Product datasheet for **TA360321**

BAP31 (BCAP31) Rabbit Polyclonal Antibody

Product data:

Product Type:	Primary Antibodies
Applications:	WB
Reactivity:	Human
Host:	Rabbit
Clonality:	Polyclonal
Immunogen:	The immunogen is a synthetic peptide directed towards the middle region of human BCAP31
Specificity:	Expected reactivity: Human
Formulation:	Liquid. Purified antibody supplied in 1x PBS buffer with 0.09% (w/v) sodium azide and 2% sucrose. <i>Note that this product is shipped as lyophilized powder to China customers.</i>
Concentration:	lot specific
Purification:	Affinity purified
Conjugation:	Unconjugated
Storage:	For short term use, store at 2-8°C up to 1 week. For long term storage, store at -20°C in small aliquots to prevent freeze-thaw cycles.
Stability:	Shelf life: one year from despatch.
Predicted Protein Size:	28 kDa
Gene Name:	B-cell receptor-associated protein 31
Database Link:	NP_001132913.1 Entrez Gene 10134 Human P51572
Background:	This gene encodes a member of the B-cell receptor associated protein 31 superfamily. The encoded protein is a multi-pass transmembrane protein of the endoplasmic reticulum that is involved in the anterograde transport of membrane proteins from the endoplasmic reticulum to the Golgi and in caspase 8-mediated apoptosis. Microdeletions in this gene are associated with contiguous ABCD1/DXS1375E deletion syndrome (CADD5), a neonatal disorder. Alternative splicing of this gene results in multiple transcript variants. Two related pseudogenes have been identified on chromosome 16.

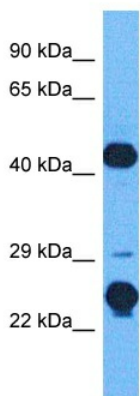


[View online »](#)

Synonyms: 6C6-AG; BAP31; CDM; DELXq28; DXS1357E; MICRODELXq28; OTTHUMP00000025978

Protein Families: Druggable Genome, Transmembrane

Product images:



Host: Rabbit
Target Name: BAP31
Sample Tissue: Fetal Liver Lysate
Antibody Dilution: 1.0µg/ml

Host: Rabbit
Target Name: BCAP31
Sample Tissue: Human Fetal Liver
Antibody Dilution: 1.0ug/ml