

Product datasheet for **TA360317**

Arp3 (ACTR3) Rabbit Polyclonal Antibody

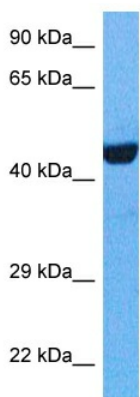
Product data:

Product Type:	Primary Antibodies
Applications:	WB
Reactivity:	Human, Mouse
Host:	Rabbit
Clonality:	Polyclonal
Immunogen:	The immunogen is a synthetic peptide directed towards the middle region of human ACTR3
Specificity:	Expected reactivity: Human
Formulation:	Liquid. Purified antibody supplied in 1x PBS buffer with 0.09% (w/v) sodium azide and 2% sucrose. <i>Note that this product is shipped as lyophilized powder to China customers.</i>
Concentration:	lot specific
Purification:	Affinity purified
Conjugation:	Unconjugated
Storage:	For short term use, store at 2-8°C up to 1 week. For long term storage, store at -20°C in small aliquots to prevent freeze-thaw cycles.
Stability:	Shelf life: one year from despatch.
Predicted Protein Size:	47 kDa
Gene Name:	ARP3 actin-related protein 3 homolog (yeast)
Database Link:	NP_005712.1 Entrez Gene 74117 Mouse Entrez Gene 10096 Human P61158
Background:	The specific function of this gene has not yet been determined; however, the protein it encodes is known to be a major constituent of the ARP2/3 complex. This complex is located at the cell surface and is essential to cell shape and motility through lamellipodial actin assembly and protrusion. Three transcript variants encoding two different isoforms have been found for this gene.
Synonyms:	ARP3
Protein Families:	Druggable Genome



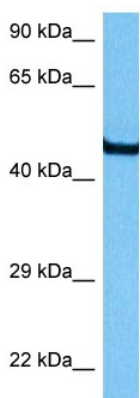
[View online »](#)

Product images:



Host: Rabbit
 Target Name: ARP3
 Sample Tissue: Jurkat Cell Lysate
 Antibody Dilution: 1.0µg/ml

Host: Rabbit
 Target Name: ACTR3
 Sample Tissue: Human Jurkat Whole Cell
 Antibody Dilution: 1.0ug/ml



Host: Rabbit
 Target Name: Actr3
 Sample Type: Mouse Pancreas Lysate
 Antibody Dilution: 1.0µg/ml

Host: Mouse
 Target Name: ACTR3
 Sample Tissue: Mouse Pancreas
 Antibody Dilution: 1ug/ml