

Product datasheet for **TA360312**

SH2D3A Rabbit Polyclonal Antibody

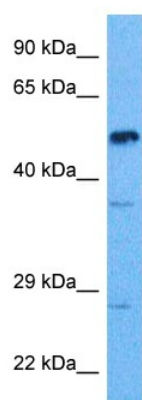
Product data:

Product Type:	Primary Antibodies
Applications:	WB
Reactivity:	Human
Host:	Rabbit
Clonality:	Polyclonal
Immunogen:	The immunogen is a synthetic peptide directed towards the middle region of human SH2D3A
Specificity:	Expected reactivity: Human
Formulation:	Liquid. Purified antibody supplied in 1x PBS buffer with 0.09% (w/v) sodium azide and 2% sucrose. <i>Note that this product is shipped as lyophilized powder to China customers.</i>
Concentration:	lot specific
Purification:	Affinity purified
Conjugation:	Unconjugated
Storage:	For short term use, store at 2-8°C up to 1 week. For long term storage, store at -20°C in small aliquots to prevent freeze-thaw cycles.
Stability:	Shelf life: one year from despatch.
Predicted Protein Size:	63 kDa
Gene Name:	SH2 domain containing 3A
Database Link:	NP_005481.2 Entrez Gene 10045 Human Q9BRG2
Synonyms:	NSP1
Protein Families:	Druggable Genome



[View online »](#)

Product images:



Host: Rabbit
Target Name: SH23A
Sample Tissue: 786-0 Cell Lysate
Antibody Dilution: 1.0µg/ml

Host: Rabbit
Target Name: SH2D3A
Sample Tissue: Human 786-0 Whole Cell
Antibody Dilution: 1.0ug/ml