

## Product datasheet for **TA360311**

### **OXR1 Rabbit Polyclonal Antibody**

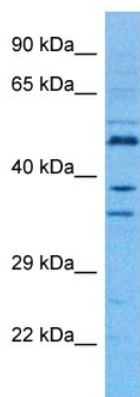
#### **Product data:**

Product Type:	Primary Antibodies
Applications:	WB
Reactivity:	Human
Host:	Rabbit
Clonality:	Polyclonal
Immunogen:	The immunogen is a synthetic peptide directed towards the middle region of human OXR1
Specificity:	<b>Expected reactivity:</b> Human
Formulation:	Liquid. Purified antibody supplied in 1x PBS buffer with 0.09% (w/v) sodium azide and 2% sucrose. <i>Note that this product is shipped as lyophilized powder to China customers.</i>
Concentration:	lot specific
Purification:	Affinity purified
Conjugation:	Unconjugated
Storage:	For short term use, store at 2-8°C up to 1 week. For long term storage, store at -20°C in small aliquots to prevent freeze-thaw cycles.
Stability:	Shelf life: one year from despatch.
Predicted Protein Size:	58 kDa
Gene Name:	oxidative stress responsive 1
Database Link:	<a href="#">NP_005100.1</a> <a href="#">Entrez Gene 9943 Human</a> <a href="#">O95747</a>
Background:	The product of this gene belongs to the Ser/Thr protein kinase family of proteins. It regulates downstream kinases in response to environmental stress, and may play a role in regulating the actin cytoskeleton.
Synonyms:	KIAA1101; OSR1
Protein Families:	Druggable Genome, Protein Kinase



[View online »](#)

Product images:



Host: Rabbit  
Target Name: OXR1  
Sample Tissue: 786-0 Cell Lysate  
Antibody Dilution: 1.0 $\mu$ g/ml

Host: Rabbit  
Target Name: OXR1  
Sample Tissue: Human 786-0 Whole Cell  
Antibody Dilution: 1.0 $\mu$ g/ml