

## Product datasheet for **TA360303**

### PLEKHM1 Rabbit Polyclonal Antibody

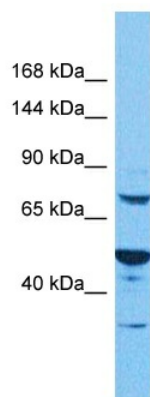
#### Product data:

Product Type:	Primary Antibodies
Applications:	WB
Reactivity:	Human
Host:	Rabbit
Clonality:	Polyclonal
Immunogen:	The immunogen is a synthetic peptide directed towards the middle region of human PLEKHM1
Specificity:	<b>Expected reactivity:</b> Human
Formulation:	Liquid. Purified antibody supplied in 1x PBS buffer with 0.09% (w/v) sodium azide and 2% sucrose.
Concentration:	lot specific
Purification:	Affinity purified
Conjugation:	Unconjugated
Storage:	For short term use, store at 2-8°C up to 1 week. For long term storage, store at -20°C in small aliquots to prevent freeze-thaw cycles.
Stability:	Shelf life: one year from despatch.
Predicted Protein Size:	57 kDa
Gene Name:	pleckstrin homology and RUN domain containing M1
Database Link:	<a href="#">NP_055613.1</a> <a href="#">Entrez Gene 9842 Human</a> <a href="#">Q69YJ1</a>
Background:	The protein encoded by this gene is essential for bone resorption, and may play a critical role in vesicular transport in the osteoclast. Mutations in this gene are associated with autosomal recessive osteopetrosis type 6 (OPTB6). Alternatively spliced transcript variants have been found for this gene.
Synonyms:	AP162; B2; KIAA0356; OPTB6



[View online »](#)

## Product images:



Host: Rabbit  
Target Name: PLEKHM1  
Sample Type: PANC1 Cell Lysate  
Antibody Dilution: 1.0 $\mu$ g/ml

Host: Rabbit  
Target Name: PLEKHM1  
Sample Tissue: PANC1 Whole Cell lysates  
Antibody Dilution: 1  $\mu$ g/ml