

## Product datasheet for **TA360300**

### PROSAPIP1 (LZTS3) Rabbit Polyclonal Antibody

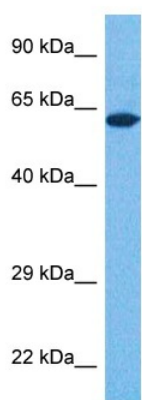
#### Product data:

Product Type:	Primary Antibodies
Applications:	WB
Reactivity:	Human
Host:	Rabbit
Clonality:	Polyclonal
Immunogen:	The immunogen is a synthetic peptide directed towards the middle region of human PROSAPIP1
Specificity:	<b>Expected reactivity:</b> Human
Formulation:	Liquid. Purified antibody supplied in 1x PBS buffer with 0.09% (w/v) sodium azide and 2% sucrose.
Concentration:	lot specific
Purification:	Affinity purified
Conjugation:	Unconjugated
Storage:	For short term use, store at 2-8°C up to 1 week. For long term storage, store at -20°C in small aliquots to prevent freeze-thaw cycles.
Stability:	Shelf life: one year from despatch.
Predicted Protein Size:	72 kDa
Gene Name:	leucine zipper tumor suppressor family member 3
Database Link:	<a href="#">NP_001269462.1</a> <a href="#">Entrez Gene 9762 Human</a> <a href="#">O60299</a>
Synonyms:	PROSAPIP1; RP5-1187M17.10



[View online »](#)

## Product images:



Host: Rabbit  
Target Name: LZTS3  
Sample Tissue: 293T Cell Lysate  
Antibody Dilution: 1.0 $\mu$ g/ml

Host: Rabbit  
Target Name: PROSAPIP1  
Sample Tissue: Human 293T Whole Cell  
Antibody Dilution: 1.0 $\mu$ g/ml