

Product datasheet for **TA360294**

POLR1C Rabbit Polyclonal Antibody

Product data:

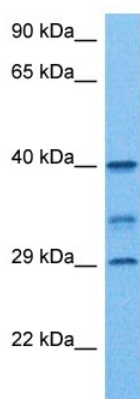
Product Type:	Primary Antibodies
Applications:	WB
Reactivity:	Human
Host:	Rabbit
Clonality:	Polyclonal
Immunogen:	The immunogen is a synthetic peptide directed towards the N terminal region of human POLR1C
Specificity:	Expected reactivity: Human
Formulation:	Liquid. Purified antibody supplied in 1x PBS buffer with 0.09% (w/v) sodium azide and 2% sucrose. <i>Note that this product is shipped as lyophilized powder to China customers.</i>
Concentration:	lot specific
Purification:	Affinity purified
Conjugation:	Unconjugated
Storage:	For short term use, store at 2-8°C up to 1 week. For long term storage, store at -20°C in small aliquots to prevent freeze-thaw cycles.
Stability:	Shelf life: one year from despatch.
Predicted Protein Size:	39 kDa
Gene Name:	polymerase (RNA) I subunit C
Database Link:	NP_976035.1 Entrez Gene 9533 Human O15160
Background:	The protein encoded by this gene is a subunit of both RNA polymerase I and RNA polymerase III complexes. The encoded protein is part of the Pol core element. Defects in this gene have been associated with Treacher Collins syndrome (TCS).
Synonyms:	AC40; POLR1E; RPA5; RPA39; RPA40; RPAC1; RPC40
Protein Families:	Druggable Genome, Stem cell - Pluripotency, Transcription Factors



[View online »](#)

Protein Pathways: Cytosolic DNA-sensing pathway, Metabolic pathways, Purine metabolism, Pyrimidine metabolism, RNA polymerase

Product images:



Host: Rabbit
Target Name: RPAC1
Sample Tissue: Stomach Tumor Lysate
Antibody Dilution: 1.0µg/ml

Host: Rabbit
Target Name: POLR1C
Sample Tissue: Human Stomach Tumor
Antibody Dilution: 1.0ug/ml