

## Product datasheet for **TA360292**

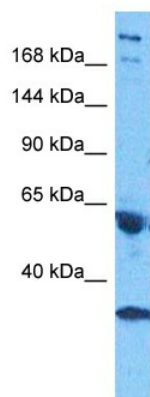
### GCC2 Rabbit Polyclonal Antibody

#### Product data:

Product Type:	Primary Antibodies
Applications:	WB
Reactivity:	Human
Host:	Rabbit
Clonality:	Polyclonal
Immunogen:	The immunogen is a synthetic peptide directed towards the middle region of human GCC2
Specificity:	<b>Expected reactivity:</b> Human
Formulation:	Liquid. Purified antibody supplied in 1x PBS buffer with 0.09% (w/v) sodium azide and 2% sucrose. <i>Note that this product is shipped as lyophilized powder to China customers.</i>
Concentration:	lot specific
Purification:	Affinity purified
Conjugation:	Unconjugated
Storage:	For short term use, store at 2-8°C up to 1 week. For long term storage, store at -20°C in small aliquots to prevent freeze-thaw cycles.
Stability:	Shelf life: one year from despatch.
Predicted Protein Size:	196 kDa
Gene Name:	GRIP and coiled-coil domain containing 2
Database Link:	<a href="#">NP_852118.1</a> <a href="#">Entrez Gene 9648 Human</a> <a href="#">Q8IWI2</a>
Background:	The protein encoded by this gene is a peripheral membrane protein localized to the trans-Golgi network. It is sensitive to brefeldin A. This encoded protein contains a GRIP domain which is thought to be used in targeting. Alternative splicing results in multiple transcript variants.
Synonyms:	GCC185; KIAA0336; RANBP2L4; REN53



[View online »](#)

**Product images:**

Host: Rabbit  
Target Name: GCC2  
Sample Tissue: Fetal Lung Lysate  
Antibody Dilution: 1.0 $\mu$ g/ml

Host: Rabbit  
Target Name: GCC2  
Sample Tissue: Human Fetal Lung  
Antibody Dilution: 1.0ug/ml