

Product datasheet for **TA360284**

MD1 (LY86) Rabbit Polyclonal Antibody

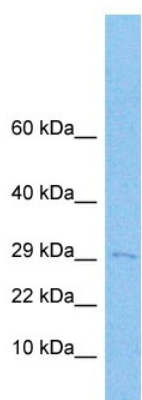
Product data:

Product Type:	Primary Antibodies
Applications:	WB
Reactivity:	Human
Host:	Rabbit
Clonality:	Polyclonal
Immunogen:	The immunogen is a synthetic peptide directed towards the N terminal region of human LY86
Specificity:	Expected reactivity: Human
Formulation:	Liquid. Purified antibody supplied in 1x PBS buffer with 0.09% (w/v) sodium azide and 2% sucrose. <i>Note that this product is shipped as lyophilized powder to China customers.</i>
Concentration:	lot specific
Purification:	Affinity purified
Conjugation:	Unconjugated
Storage:	For short term use, store at 2-8°C up to 1 week. For long term storage, store at -20°C in small aliquots to prevent freeze-thaw cycles.
Stability:	Shelf life: one year from despatch.
Predicted Protein Size:	18 kDa
Gene Name:	lymphocyte antigen 86
Database Link:	NP_004262.1 Entrez Gene 9450 Human O95711
Synonyms:	dJ80N2.1; MD-1; MD1; MMD-1; OTTHUMP00000015993
Protein Families:	Secreted Protein



[View online »](#)

Product images:



Host: Rabbit
Target Name: LY86
Sample Type: OVCAR-3 Whole Cell Lysate
Antibody Dilution: 1.0 μ g/ml

Host: Rabbit
Target Name: LY86
Sample Tissue: Human OVCAR-3 Whole Cell
Antibody Dilution: 1.0ug/ml