

Product datasheet for **TA360280**

CNOT8 Rabbit Polyclonal Antibody

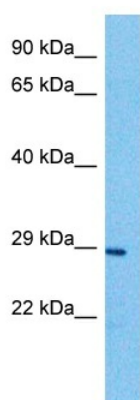
Product data:

Product Type:	Primary Antibodies
Applications:	WB
Reactivity:	Human
Host:	Rabbit
Clonality:	Polyclonal
Immunogen:	The immunogen is a synthetic peptide directed towards the middle region of human CNOT8
Specificity:	Expected reactivity: Human
Formulation:	Liquid. Purified antibody supplied in 1x PBS buffer with 0.09% (w/v) sodium azide and 2% sucrose. <i>Note that this product is shipped as lyophilized powder to China customers.</i>
Concentration:	lot specific
Purification:	Affinity purified
Conjugation:	Unconjugated
Storage:	For short term use, store at 2-8°C up to 1 week. For long term storage, store at -20°C in small aliquots to prevent freeze-thaw cycles.
Stability:	Shelf life: one year from despatch.
Predicted Protein Size:	34 kDa
Gene Name:	CCR4-NOT transcription complex subunit 8
Database Link:	NP_001288002.1 Entrez Gene 9337 Human Q9UFF9
Synonyms:	CAF1; CAF2; CALIF; CALIFp; hCAF1; POP2
Protein Families:	Transcription Factors
Protein Pathways:	RNA degradation



[View online »](#)

Product images:



Host: Rabbit
Target Name: CNOT8
Sample Type: HepG2 Whole Cell Lysate
Antibody Dilution: 1.0 μ g/ml

Host: Rabbit
Target Name: CNOT8
Sample Tissue: Human HepG2 Whole Cell
Antibody Dilution: 1.0 μ g/ml