

Product datasheet for **TA360276**

Synaptogyrin 2 (SYNGR2) Rabbit Polyclonal Antibody

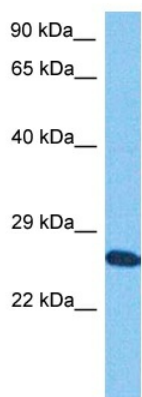
Product data:

Product Type:	Primary Antibodies
Applications:	WB
Reactivity:	Human
Host:	Rabbit
Clonality:	Polyclonal
Immunogen:	The immunogen is a synthetic peptide directed towards the middle region of human SYNGR2
Specificity:	Expected reactivity: Human
Formulation:	Liquid. Purified antibody supplied in 1x PBS buffer with 0.09% (w/v) sodium azide and 2% sucrose.
Concentration:	lot specific
Purification:	Affinity purified
Conjugation:	Unconjugated
Storage:	For short term use, store at 2-8°C up to 1 week. For long term storage, store at -20°C in small aliquots to prevent freeze-thaw cycles.
Stability:	Shelf life: one year from despatch.
Predicted Protein Size:	25 kDa
Gene Name:	synaptogyrin 2
Database Link:	NP_004701.1 Entrez Gene 9144 Human O43760
Background:	This gene encodes an integral membrane protein containing four transmembrane regions and a C-terminal cytoplasmic tail that is tyrosine phosphorylated. The exact function of this protein is unclear, but studies of a similar rat protein suggest that it may play a role in regulating membrane traffic in non-neuronal cells. The gene belongs to the synaptogyrin gene family.
Synonyms:	cellugyrin; MGC102914
Protein Families:	Transmembrane



[View online »](#)

Product images:



Host: Rabbit
Target Name: SNG2
Sample Type: MCF7 Whole Cell Lysate
Antibody Dilution: 1.0 μ g/ml

Host: Rabbit
Target Name: SYNGR2
Sample Tissue: Human MCF7 Whole Cell
Antibody Dilution: 1.0 μ g/ml