

## Product datasheet for **TA360275**

### Synaptogyrin 3 (SYNGR3) Rabbit Polyclonal Antibody

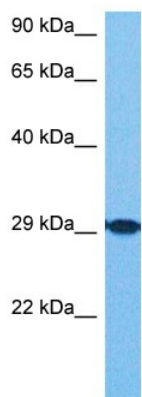
#### Product data:

Product Type:	Primary Antibodies
Applications:	WB
Reactivity:	Human
Host:	Rabbit
Clonality:	Polyclonal
Immunogen:	The immunogen is a synthetic peptide directed towards the C terminal region of human SYNGR3
Specificity:	<b>Expected reactivity:</b> Human
Formulation:	Liquid. Purified antibody supplied in 1x PBS buffer with 0.09% (w/v) sodium azide and 2% sucrose.
Concentration:	lot specific
Purification:	Affinity purified
Conjugation:	Unconjugated
Storage:	For short term use, store at 2-8°C up to 1 week. For long term storage, store at -20°C in small aliquots to prevent freeze-thaw cycles.
Stability:	Shelf life: one year from despatch.
Predicted Protein Size:	25 kDa
Gene Name:	synaptogyrin 3
Database Link:	<a href="#">NP_004200.2</a> <a href="#">Entrez Gene 9143 Human</a> <a href="#">O43761</a>
Background:	This gene encodes an integral membrane protein. The exact function of this protein is unclear, but studies of a similar murine protein suggest that it is a synaptic vesicle protein that also interacts with the dopamine transporter. The gene product belongs to the synaptogyrin gene family.
Synonyms:	MGC:20003
Protein Families:	Transmembrane



[View online »](#)

**Product images:**



Host: Rabbit  
Target Name: SNG3  
Sample Type: Jurkat Whole Cell Lysate  
Antibody Dilution: 1.0µg/ml

Host: Rabbit  
Target Name: SYNGR3  
Sample Tissue: Human Jurkat Whole Cell  
Antibody Dilution: 1.0ug/ml