

Product datasheet for **TA360274**

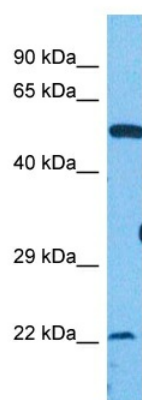
SLC7A6 Rabbit Polyclonal Antibody

Product data:

Product Type:	Primary Antibodies
Applications:	WB
Reactivity:	Human
Host:	Rabbit
Clonality:	Polyclonal
Immunogen:	The immunogen is a synthetic peptide directed towards the N terminal region of human SLC7A6
Specificity:	Expected reactivity: Human
Formulation:	Liquid. Purified antibody supplied in 1x PBS buffer with 0.09% (w/v) sodium azide and 2% sucrose.
Concentration:	lot specific
Purification:	Affinity purified
Conjugation:	Unconjugated
Storage:	For short term use, store at 2-8°C up to 1 week. For long term storage, store at -20°C in small aliquots to prevent freeze-thaw cycles.
Stability:	Shelf life: one year from despatch.
Predicted Protein Size:	57 kDa
Gene Name:	solute carrier family 7 member 6
Database Link:	NP_001070253.1 Entrez Gene 9057 Human Q92536
Synonyms:	DKFZp686K15246; KIAA0245; LAT-2; LAT3; y+LAT-2; Y+LAT2
Protein Families:	Druggable Genome, Transmembrane

[View online »](#)

Product images:



Host: Rabbit
Target Name: YLAT2
Sample Type: Jurkat Whole Cell Lysate
Antibody Dilution: 1.0µg/ml

Host: Rabbit
Target Name: SLC7A6
Sample Tissue: Human Jurkat Whole Cell
Antibody Dilution: 1.0ug/ml