

Product datasheet for **TA360270**

SLC25A14 Rabbit Polyclonal Antibody

Product data:

| | |
|-------------------------|---|
| Product Type: | Primary Antibodies |
| Applications: | WB |
| Reactivity: | Human |
| Host: | Rabbit |
| Clonality: | Polyclonal |
| Immunogen: | The immunogen is a synthetic peptide directed towards the N terminal region of human SLC25A14 |
| Specificity: | Expected reactivity: Human |
| Formulation: | Liquid. Purified antibody supplied in 1x PBS buffer with 0.09% (w/v) sodium azide and 2% sucrose. <i>Note that this product is shipped as lyophilized powder to China customers.</i> |
| Concentration: | lot specific |
| Purification: | Affinity purified |
| Conjugation: | Unconjugated |
| Storage: | For short term use, store at 2-8°C up to 1 week. For long term storage, store at -20°C in small aliquots to prevent freeze-thaw cycles. |
| Stability: | Shelf life: one year from despatch. |
| Predicted Protein Size: | 36 kDa |
| Gene Name: | solute carrier family 25 member 14 |
| Database Link: | NP_001269124.1 Entrez Gene 9016 Human O95258 |



[View online »](#)

Background:

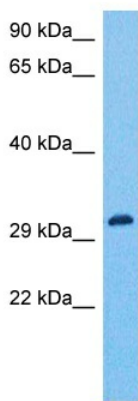
Mitochondrial uncoupling proteins (UCP) are members of the larger family of mitochondrial anion carrier proteins (MACP). Uncoupling proteins separate oxidative phosphorylation from ATP synthesis with energy dissipated as heat, also referred to as the mitochondrial proton leak. Uncoupling proteins facilitate the transfer of anions from the inner to the outer mitochondrial membrane and the return transfer of protons from the outer to the inner mitochondrial membrane. They also reduce the mitochondrial membrane potential in mammalian cells. This gene is widely expressed in many tissues with the greatest abundance in brain and testis. Alternative splicing results in multiple transcript variants. A pseudogene of this gene has been defined on chromosome 4.

Synonyms:

BMCP-1; BMCP1; MGC149543; UCP5

Protein Families:

Druggable Genome

Product images:

Host: Rabbit
Target Name: UCP5
Sample Type: Jurkat Whole Cell Lysate
Antibody Dilution: 1.0µg/ml

Host: Rabbit
Target Name: SLC25A14
Sample Tissue: Human Jurkat Whole Cell
Antibody Dilution: 1.0ug/ml