

## Product datasheet for **TA360264**

### **B4GALT3 (B4GALT2) Rabbit Polyclonal Antibody**

#### Product data:

Product Type:	Primary Antibodies
Applications:	WB
Reactivity:	Human
Host:	Rabbit
Clonality:	Polyclonal
Immunogen:	The immunogen is a synthetic peptide directed towards the middle region of human B4GALT2
Specificity:	<b>Expected reactivity:</b> Human
Formulation:	Liquid. Purified antibody supplied in 1x PBS buffer with 0.09% (w/v) sodium azide and 2% sucrose. <i>Note that this product is shipped as lyophilized powder to China customers.</i>
Concentration:	lot specific
Purification:	Affinity purified
Conjugation:	Unconjugated
Storage:	For short term use, store at 2-8°C up to 1 week. For long term storage, store at -20°C in small aliquots to prevent freeze-thaw cycles.
Stability:	Shelf life: one year from despatch.
Predicted Protein Size:	42 kDa
Gene Name:	beta-1,4-galactosyltransferase 2
Database Link:	<a href="#">NP_001005417.1</a> <a href="#">Entrez Gene 8704 Human</a> <a href="#">O60909</a>



[View online »](#)

**Background:**

This gene is one of seven beta-1,4-galactosyltransferase (beta4GalT) genes. They encode type II membrane-bound glycoproteins that appear to have exclusive specificity for the donor substrate UDP-galactose; all transfer galactose in a beta1,4 linkage to similar acceptor sugars: GlcNAc, Glc, and Xyl. Each beta4GalT has a distinct function in the biosynthesis of different glycoconjugates and saccharide structures. As type II membrane proteins, they have an N-terminal hydrophobic signal sequence that directs the protein to the Golgi apparatus and which then remains uncleaved to function as a transmembrane anchor. By sequence similarity, the beta4GalTs form four groups: beta4GalT1 and beta4GalT2, beta4GalT3 and beta4GalT4, beta4GalT5 and beta4GalT6, and beta4GalT7. The enzyme encoded by this gene synthesizes N-acetyllactosamine in glycolipids and glycoproteins. Its substrate specificity is affected by alpha-lactalbumin but it is not expressed in lactating mammary tissue. Three transcript variants encoding two different isoforms have been found for this gene.

**Synonyms:**

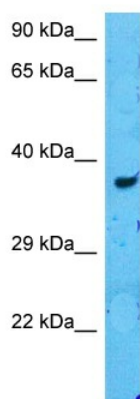
B4Gal-T2; B4Gal-T3; beta-4-GalT2; beta4Gal-T2

**Protein Families:**

Transmembrane

**Protein Pathways:**

Galactose metabolism, Glycosphingolipid biosynthesis - lacto and neolacto series, Keratan sulfate biosynthesis, Metabolic pathways, N-Glycan biosynthesis

**Product images:**


Host: Rabbit  
Target Name: B4GALT2  
Sample Type: 293T Cell Lysate  
Antibody Dilution: 1.0µg/ml

Host: Rabbit  
Target Name: B4GALT2  
Sample Tissue: Human 293T Whole Cell  
Antibody Dilution: 1.0ug/ml