

## Product datasheet for **TA360263**

### HPS2 (AP3B1) Rabbit Polyclonal Antibody

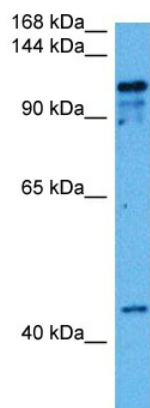
#### Product data:

Product Type:	Primary Antibodies
Applications:	WB
Reactivity:	Human
Host:	Rabbit
Clonality:	Polyclonal
Immunogen:	The immunogen is a synthetic peptide directed towards the middle region of human AP3B1
Specificity:	<b>Expected reactivity:</b> Human
Formulation:	Liquid. Purified antibody supplied in 1x PBS buffer with 0.09% (w/v) sodium azide and 2% sucrose. <i>Note that this product is shipped as lyophilized powder to China customers.</i>
Concentration:	lot specific
Purification:	Affinity purified
Conjugation:	Unconjugated
Storage:	For short term use, store at 2-8°C up to 1 week. For long term storage, store at -20°C in small aliquots to prevent freeze-thaw cycles.
Stability:	Shelf life: one year from despatch.
Predicted Protein Size:	120 kDa
Gene Name:	adaptor related protein complex 3 beta 1 subunit
Database Link:	<a href="#">NP_001258698.1</a> <a href="#">Entrez Gene 8546 Human</a> <a href="#">O00203</a>
Background:	This gene encodes a protein that may play a role in organelle biogenesis associated with melanosomes, platelet dense granules, and lysosomes. The encoded protein is part of the heterotetrameric AP-3 protein complex which interacts with the scaffolding protein clathrin. Mutations in this gene are associated with Hermansky-Pudlak syndrome type 2. Two transcript variants encoding different isoforms have been found for this gene.
Synonyms:	ADTB3; ADTB3A; beta3A-adaptin; HPS; HPS2; PE
Protein Pathways:	Lysosome



[View online »](#)

## Product images:



Host: Rabbit  
Target Name: AP3B1  
Sample Type: PANC1 Cell Lysate  
Antibody Dilution: 1.0 $\mu$ g/ml

Host: Rabbit  
Target Name: AP3B1  
Sample Tissue: Human PANC1 Whole Cell lysates  
Antibody Dilution: 1ug/ml