

Product datasheet for **TA360260**

MAP4K3 Rabbit Polyclonal Antibody

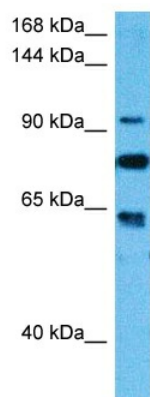
Product data:

| | |
|-------------------------|--|
| Product Type: | Primary Antibodies |
| Applications: | WB |
| Reactivity: | Human |
| Host: | Rabbit |
| Clonality: | Polyclonal |
| Immunogen: | The immunogen is a synthetic peptide directed towards the middle region of human MAP4K3 |
| Specificity: | Expected reactivity: Human |
| Formulation: | Liquid. Purified antibody supplied in 1x PBS buffer with 0.09% (w/v) sodium azide and 2% sucrose. <i>Note that this product is shipped as lyophilized powder to China customers.</i> |
| Concentration: | lot specific |
| Purification: | Affinity purified |
| Conjugation: | Unconjugated |
| Storage: | For short term use, store at 2-8°C up to 1 week. For long term storage, store at -20°C in small aliquots to prevent freeze-thaw cycles. |
| Stability: | Shelf life: one year from despatch. |
| Predicted Protein Size: | 101 kDa |
| Gene Name: | mitogen-activated protein kinase kinase kinase kinase 3 |
| Database Link: | NP_001257354.1 Entrez Gene 8491 Human Q8IVH8 |
| Background: | This gene encodes a member of the mitogen-activated protein kinase kinase kinase kinase family. The encoded protein activates key effectors in cell signalling, among them c-Jun. Alternatively spliced transcripts encoding multiple isoforms have been observed for this gene. |
| Synonyms: | GLK; MAPKKKK3; RAB8IPL1 |
| Protein Families: | Druggable Genome, Protein Kinase |
| Protein Pathways: | MAPK signaling pathway |



[View online »](#)

Product images:



Host: Rabbit
Target Name: MAP4K3
Sample Type: Neurofibroma Tumor Lysate
Antibody Dilution: 1.0 μ g/ml

Host: Rabbit
Target Name: MAP4K3
Sample Tissue: Human Neurofibroma Tumor lysates
Antibody Dilution: 1 μ g/ml