

## Product datasheet for **TA360256**

### DGCR6 Rabbit Polyclonal Antibody

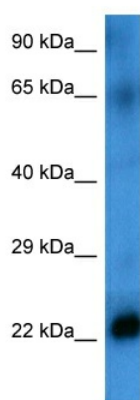
#### Product data:

|                         |   |
|-------------------------|---|
| Product Type:           | Primary Antibodies  |
| Applications:           | WB  |
| Reactivity:             | Human   |
| Host:                   | Rabbit  |
| Clonality:              | Polyclonal  |
| Immunogen:              | The immunogen is a synthetic peptide directed towards the middle region of human DGCR6  |
| Specificity:            | <b>Expected reactivity:</b> Human   |
| Formulation:            | Liquid. Purified antibody supplied in 1x PBS buffer with 0.09% (w/v) sodium azide and 2% sucrose.<br><i>Note that this product is shipped as lyophilized powder to China customers.</i>   |
| Concentration:          | lot specific  |
| Purification:           | Affinity purified   |
| Conjugation:            | Unconjugated  |
| Storage:                | For short term use, store at 2-8°C up to 1 week. For long term storage, store at -20°C in small aliquots to prevent freeze-thaw cycles.   |
| Stability:              | Shelf life: one year from despatch.   |
| Predicted Protein Size: | 25 kDa  |
| Gene Name:              | DiGeorge syndrome critical region gene 6  |
| Database Link:          | <a href="#">NP_005666.2</a><br><a href="#">Entrez Gene 8214 Human</a><br><a href="#">Q14129</a>   |
| Background:             | DiGeorge syndrome, and more widely, the CATCH 22 syndrome, are associated with microdeletions in chromosomal region 22q11.2. The product of this gene shares homology with the Drosophila melanogaster gonadal protein, which participates in gonadal and germ cell development, and with the gamma-1 subunit of human laminin. This gene is a candidate for involvement in DiGeorge syndrome pathology and in schizophrenia. |
| Synonyms:               | DGCR6   |
| Protein Families:       | Druggable Genome, ES Cell Differentiation/IPS   |



[View online »](#)

## Product images:



Host: Rabbit  
Target Name: DGCR6  
Sample Type: HeLa Cell Lysate  
Antibody Dilution: 1.0 $\mu$ g/ml

Host: Rabbit  
Target Name: DGCR6  
Sample Tissue: Human HeLa Whole Cell  
Antibody Dilution: 1.0 $\mu$ g/ml