

Product datasheet for **TA360255**

CAVIN2 Rabbit Polyclonal Antibody

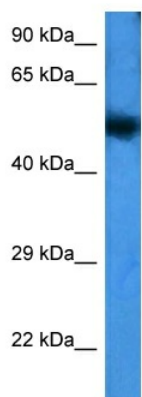
Product data:

Product Type:	Primary Antibodies
Applications:	WB
Reactivity:	Human
Host:	Rabbit
Clonality:	Polyclonal
Immunogen:	The immunogen is a synthetic peptide directed towards the N terminal region of human SDPR
Specificity:	Expected reactivity: Human
Formulation:	Liquid. Purified antibody supplied in 1x PBS buffer with 0.09% (w/v) sodium azide and 2% sucrose. <i>Note that this product is shipped as lyophilized powder to China customers.</i>
Concentration:	lot specific
Purification:	Affinity purified
Conjugation:	Unconjugated
Storage:	For short term use, store at 2-8°C up to 1 week. For long term storage, store at -20°C in small aliquots to prevent freeze-thaw cycles.
Stability:	Shelf life: one year from despatch.
Predicted Protein Size:	47 kDa
Gene Name:	serum deprivation response
Database Link:	NP_004648.1 Entrez Gene 8436 Human O95810
Background:	This gene encodes a calcium-independent phospholipid-binding protein whose expression increases in serum-starved cells. This protein is a substrate for protein kinase C (PKC) phosphorylation and recruits polymerase I and transcript release factor (PTRF) to caveolae. Removal of this protein causes caveolae loss and its over-expression results in caveolae deformation and membrane tubulation.
Synonyms:	cavin-2; PS-p68; SDR



[View online »](#)

Product images:



Host: Rabbit
Target Name: SDPR
Sample Type: Leiomyosarcoma Tumor Lysat
Antibody Dilution: 1.0µg/ml

Host: Rabbit
Target Name: SDPR
Sample Tissue: leiomyosarcoma lysates
Antibody Dilution: 1 ug/ml