

Product datasheet for **TA360254**

PHAP1 (ANP32A) Rabbit Polyclonal Antibody

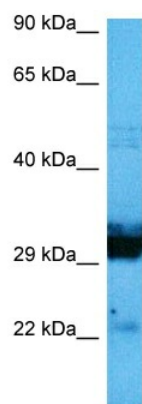
Product data:

Product Type:	Primary Antibodies
Applications:	WB
Reactivity:	Human
Host:	Rabbit
Clonality:	Polyclonal
Immunogen:	The immunogen is a synthetic peptide directed towards the C terminal region of human ANP32A
Specificity:	Expected reactivity: Human
Formulation:	Liquid. Purified antibody supplied in 1x PBS buffer with 0.09% (w/v) sodium azide and 2% sucrose. <i>Note that this product is shipped as lyophilized powder to China customers.</i>
Concentration:	lot specific
Purification:	Affinity purified
Conjugation:	Unconjugated
Storage:	For short term use, store at 2-8°C up to 1 week. For long term storage, store at -20°C in small aliquots to prevent freeze-thaw cycles.
Stability:	Shelf life: one year from despatch.
Predicted Protein Size:	29 kDa
Gene Name:	acidic nuclear phosphoprotein 32 family member A
Database Link:	NP_006296.1 Entrez Gene 8125 Human P39687
Synonyms:	C15orf1; I1PP2A; LANP; MAPM; mapmodulin; MGC119787; MGC150373; PHAP1; PHAPI; PP32
Protein Families:	Druggable Genome, Stem cell - Pluripotency



[View online »](#)

Product images:



Host: Rabbit
Target Name: ANP32A
Sample Type: MCF7 Cell Lysate
Antibody Dilution: 1.0 μ g/ml

Host: Rabbit
Target Name: ANP32A
Sample Tissue: Human MCF7 Whole Cell
Antibody Dilution: 1.0ug/ml