

## Product datasheet for **TA360253**

### **TAGLN2 Rabbit Polyclonal Antibody**

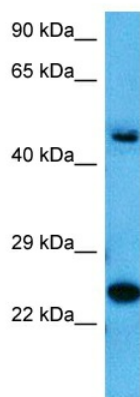
#### **Product data:**

Product Type:	Primary Antibodies
Applications:	WB
Reactivity:	Human
Host:	Rabbit
Clonality:	Polyclonal
Immunogen:	The immunogen is a synthetic peptide directed towards the middle region of human TAGLN2
Specificity:	<b>Expected reactivity:</b> Human
Formulation:	Liquid. Purified antibody supplied in 1x PBS buffer with 0.09% (w/v) sodium azide and 2% sucrose. <i>Note that this product is shipped as lyophilized powder to China customers.</i>
Concentration:	lot specific
Purification:	Affinity purified
Conjugation:	Unconjugated
Storage:	For short term use, store at 2-8°C up to 1 week. For long term storage, store at -20°C in small aliquots to prevent freeze-thaw cycles.
Stability:	Shelf life: one year from despatch.
Predicted Protein Size:	22 kDa
Gene Name:	transgelin 2
Database Link:	<a href="#">NP_001264152.1</a> <a href="#">Entrez Gene 8407 Human</a> <a href="#">P37802</a>
Background:	The protein encoded by this gene is similar to the protein transgelin, which is one of the earliest markers of differentiated smooth muscle. The specific function of this protein has not yet been determined, although it is thought to be a tumor suppressor. Multiple transcript variants encoding different isoforms have been found for this gene.
Synonyms:	2700094C18Rik; Sm22a; Sm22B; SM22beta



[View online »](#)

## Product images:



Host: Rabbit  
Target Name: TAGLN2  
Sample Type: HepG2 Cell Lysate  
Antibody Dilution: 1.0 $\mu$ g/ml

Host: Rabbit  
Target Name: TAGLN2  
Sample Tissue: Human HepG2 Whole Cell  
Antibody Dilution: 1.0 $\mu$ g/ml