

Product datasheet for **TA360251**

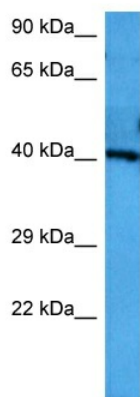
SLC7A5 Rabbit Polyclonal Antibody

Product data:

Product Type:	Primary Antibodies
Applications:	WB
Reactivity:	Mouse
Host:	Rabbit
Clonality:	Polyclonal
Immunogen:	The immunogen is a synthetic peptide directed towards the C terminal region of mouse SLC7A5
Specificity:	Expected reactivity: Mouse
Formulation:	Liquid. Purified antibody supplied in 1x PBS buffer with 0.09% (w/v) sodium azide and 2% sucrose. <i>Note that this product is shipped as lyophilized powder to China customers.</i>
Concentration:	lot specific
Purification:	Affinity purified
Conjugation:	Unconjugated
Storage:	For short term use, store at 2-8°C up to 1 week. For long term storage, store at -20°C in small aliquots to prevent freeze-thaw cycles.
Stability:	Shelf life: one year from despatch.
Predicted Protein Size:	47 kDa
Gene Name:	solute carrier family 7 member 5
Database Link:	NP_003477.4 Q3UG45
Synonyms:	4F2LC; CD98; CD98LC; D16S469E; E16; hLAT1; LAT1; MPE16



[View online »](#)

Product images:

Host: Rabbit
Target Name: Slc7a5
Sample Type: Mouse Brain Lysate
Antibody Dilution: 1.0µg/ml

Host: Rabbit
Target Name: SLC7A5
Sample Tissue: Mouse Brain lysates
Antibody Dilution: 1.0ug/ml