

## Product datasheet for **TA360247**

### SLC35A2 Rabbit Polyclonal Antibody

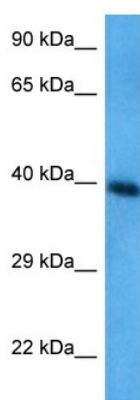
#### Product data:

Product Type:	Primary Antibodies
Applications:	WB
Reactivity:	Mouse
Host:	Rabbit
Clonality:	Polyclonal
Immunogen:	The immunogen is a synthetic peptide directed towards the C terminal region of mouse SLC35A2
Specificity:	<b>Expected reactivity:</b> Mouse
Formulation:	Liquid. Purified antibody supplied in 1x PBS buffer with 0.09% (w/v) sodium azide and 2% sucrose. <i>Note that this product is shipped as lyophilized powder to China customers.</i>
Concentration:	lot specific
Purification:	Affinity purified
Conjugation:	Unconjugated
Storage:	For short term use, store at 2-8°C up to 1 week. For long term storage, store at -20°C in small aliquots to prevent freeze-thaw cycles.
Stability:	Shelf life: one year from despatch.
Predicted Protein Size:	41 kDa
Gene Name:	solute carrier family 35 member A2
Database Link:	<a href="#">NP_511039.2</a> <a href="#">Entrez Gene 22232 Mouse</a> <a href="#">A2AER4</a>
Background:	This gene encodes a member of the nucleotide-sugar transporter family. The encoded protein is a multi-pass membrane protein. It transports UDP-galactose from the cytosol into Golgi vesicles, where it serves as a glycosyl donor for the generation of glycans. Mutations in this gene cause congenital disorder of glycosylation type II <sub>m</sub> (CDG2M). Multiple alternatively spliced transcript variants encoding distinct isoforms have been found for this gene.
Synonyms:	UDP-Gal-Tr; UGALT; UGAT; UGT; UGT1; UGT2; UGTL



[View online >](#)

## Product images:



Host: Rabbit  
Target Name: Slc35a2  
Sample Type: Mouse Heart Lysate  
Antibody Dilution: 1.0 $\mu$ g/ml

Host: Rabbit  
Target Name: SLC35A2  
Sample Tissue: Mouse Heart lysates  
Antibody Dilution: 1.0 $\mu$ g/ml