

Product datasheet for **TA360239**

TRAF3 Rabbit Polyclonal Antibody

Product data:

Product Type:	Primary Antibodies
Applications:	WB
Reactivity:	Human, Mouse
Host:	Rabbit
Clonality:	Polyclonal
Immunogen:	The immunogen is a synthetic peptide directed towards the C terminal region of human TRAF3
Specificity:	Expected reactivity: Human
Formulation:	Liquid. Purified antibody supplied in 1x PBS buffer with 0.09% (w/v) sodium azide and 2% sucrose. <i>Note that this product is shipped as lyophilized powder to China customers.</i>
Concentration:	lot specific
Purification:	Affinity purified
Conjugation:	Unconjugated
Storage:	For short term use, store at 2-8°C up to 1 week. For long term storage, store at -20°C in small aliquots to prevent freeze-thaw cycles.
Stability:	Shelf life: one year from despatch.
Predicted Protein Size:	64 kDa
Gene Name:	TNF receptor associated factor 3
Database Link:	NP_001186356.1 Entrez Gene 22031 Mouse Entrez Gene 7187 Human Q13114



[View online »](#)

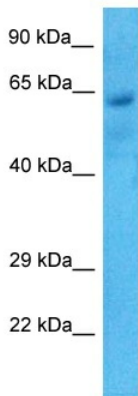
Background: The protein encoded by this gene is a member of the TNF receptor associated factor (TRAF) protein family. TRAF proteins associate with, and mediate the signal transduction from, members of the TNF receptor (TNFR) superfamily. This protein participates in the signal transduction of CD40, a TNFR family member important for the activation of the immune response. This protein is found to be a critical component of the lymphotoxin-beta receptor (LTbetaR) signaling complex, which induces NF-kappaB activation and cell death initiated by LTbeta ligation. Epstein-Barr virus encoded latent infection membrane protein-1 (LMP1) can interact with this and several other members of the TRAF family, which may be essential for the oncogenic effects of LMP1. Several alternatively spliced transcript variants encoding three distinct isoforms have been reported.

Synonyms: CAP-1; CAP1; CD40BP; CRAF1; LAP1; MIPT3

Protein Families: Druggable Genome

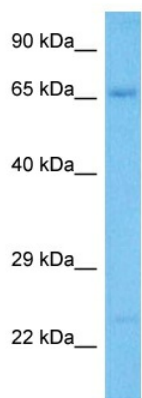
Protein Pathways: Pathways in cancer, RIG-I-like receptor signaling pathway, Small cell lung cancer, Toll-like receptor signaling pathway

Product images:



Host: Rabbit
 Target Name: TRAF3
 Sample Tissue: Stomach Tumor Lysate
 Antibody Dilution: 2.0µg/ml

Host: Rabbit
 Target Name: TRAF3
 Sample Tissue: Human Stomach Tumor
 Antibody Dilution: 1.0ug/ml



Host: Rabbit
Target Name: Traf3
Sample Type: Mouse Testis Lysate
Antibody Dilution: 1.0 μ g/ml

Host: Mouse
Target Name: TRAF3
Sample Tissue: Mouse Testis
Antibody Dilution: 1 μ g/ml