

Product datasheet for **TA360237**

THBS3 Rabbit Polyclonal Antibody

Product data:

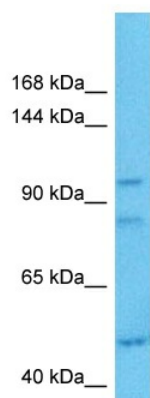
Product Type:	Primary Antibodies
Applications:	WB
Reactivity:	Human
Host:	Rabbit
Clonality:	Polyclonal
Immunogen:	The immunogen is a synthetic peptide directed towards the middle region of human THBS3
Specificity:	Expected reactivity: Human
Formulation:	Liquid. Purified antibody supplied in 1x PBS buffer with 0.09% (w/v) sodium azide and 2% sucrose. <i>Note that this product is shipped as lyophilized powder to China customers.</i>
Concentration:	lot specific
Purification:	Affinity purified
Conjugation:	Unconjugated
Storage:	For short term use, store at 2-8°C up to 1 week. For long term storage, store at -20°C in small aliquots to prevent freeze-thaw cycles.
Stability:	Shelf life: one year from despatch.
Predicted Protein Size:	104 kDa
Gene Name:	thrombospondin 3
Database Link:	NP_001239536.1 Entrez Gene 7059 Human P49746
Background:	The protein encoded by this gene belongs to the thrombospondin family. Thrombospondin family members are adhesive glycoproteins that mediate cell-to-cell and cell-to-matrix interactions. This protein forms a pentameric molecule linked by a single disulfide bond. This gene shares a common promoter with metaxin 1. Alternate splicing results in coding and non-coding transcript variants.
Synonyms:	MGC119564; MGC119565; TSP3
Protein Families:	Druggable Genome



[View online »](#)

Protein Pathways: ECM-receptor interaction, Focal adhesion, TGF-beta signaling pathway

Product images:



Host: Rabbit
Target Name: THBS3
Sample Type: MCF7 Cell Lysate
Antibody Dilution: 1.0 μ g/ml

Host: Rabbit
Target Name: THBS3
Sample Tissue: Human MCF7 Whole Cell
Antibody Dilution: 1.0 μ g/ml