

## Product datasheet for **TA360224**

### CD98 (SLC3A2) Rabbit Polyclonal Antibody

#### Product data:

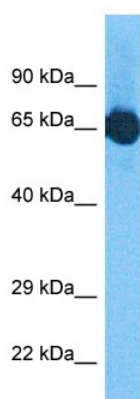
Product Type:	Primary Antibodies
Applications:	WB
Reactivity:	Human
Host:	Rabbit
Clonality:	Polyclonal
Immunogen:	The immunogen is a synthetic peptide directed towards the middle region of human SLC3A2
Specificity:	<b>Expected reactivity:</b> Human
Formulation:	Liquid. Purified antibody supplied in 1x PBS buffer with 0.09% (w/v) sodium azide and 2% sucrose. <i>Note that this product is shipped as lyophilized powder to China customers.</i>
Concentration:	lot specific
Purification:	Affinity purified
Conjugation:	Unconjugated
Storage:	For short term use, store at 2-8°C up to 1 week. For long term storage, store at -20°C in small aliquots to prevent freeze-thaw cycles.
Stability:	Shelf life: one year from despatch.
Predicted Protein Size:	68 kDa
Gene Name:	solute carrier family 3 member 2
Database Link:	<a href="#">NP_001012680.1</a> <a href="#">Entrez Gene 6520 Human</a> <a href="#">P08195</a>
Background:	This gene is a member of the solute carrier family and encodes a cell surface, transmembrane protein. The protein exists as the heavy chain of a heterodimer, covalently bound through di-sulfide bonds to one of several possible light chains. The encoded transporter plays a role in regulation of intracellular calcium levels and transports L-type amino acids. Alternatively spliced transcript variants, encoding different isoforms, have been characterized.
Synonyms:	4F2; 4F2HC; 4T2HC; CD98; CD98HC; MDU1; NACAE



[View online »](#)

Protein Families: Transmembrane

### Product images:



Host: Rabbit  
Target Name: 4F2  
Sample Tissue: Fetal Liver Lysate  
Antibody Dilution: 1.0 $\mu$ g/ml

Host: Rabbit  
Target Name: SLC3A2  
Sample Tissue: Human Fetal Liver  
Antibody Dilution: 1.0 $\mu$ g/ml