

## Product datasheet for **TA360220**

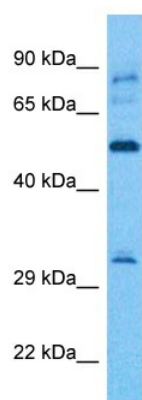
### SLC1A5 Rabbit Polyclonal Antibody

#### Product data:

Product Type:	Primary Antibodies
Applications:	WB
Reactivity:	Human
Host:	Rabbit
Clonality:	Polyclonal
Immunogen:	The immunogen is a synthetic peptide directed towards the C terminal region of human SLC1A5
Specificity:	<b>Expected reactivity:</b> Human
Formulation:	Liquid. Purified antibody supplied in 1x PBS buffer with 0.09% (w/v) sodium azide and 2% sucrose. <i>Note that this product is shipped as lyophilized powder to China customers.</i>
Concentration:	lot specific
Purification:	Affinity purified
Conjugation:	Unconjugated
Storage:	For short term use, store at 2-8°C up to 1 week. For long term storage, store at -20°C in small aliquots to prevent freeze-thaw cycles.
Stability:	Shelf life: one year from despatch.
Predicted Protein Size:	57 kDa
Gene Name:	solute carrier family 1 member 5
Database Link:	<a href="#">NP_001138616.1</a> <a href="#">Entrez Gene 6510 Human Q15758</a>
Background:	The SLC1A5 gene encodes a sodium-dependent neutral amino acid transporter that can act as a receptor for RD114/type D retrovirus (Larriba et al., 2001 [PubMed 11781704]).[supplied by OMIM, Jan 2011]
Synonyms:	AAAT; ASCT2; ATB(0); ATBO; FLJ31068; M7V1; M7VS1; R16; RDR; RDRC
Protein Families:	Druggable Genome, Transmembrane



[View online »](#)

**Product images:**

Host: Rabbit  
Target Name: AAAT  
Sample Tissue: 786-0 Cell Lysate  
Antibody Dilution: 1.0 $\mu$ g/ml

Host: Rabbit  
Target Name: SLC1A5  
Sample Tissue: Human 786-0 Whole Cell  
Antibody Dilution: 1.0 $\mu$ g/ml