

## Product datasheet for **TA360219**

### SIM2 Rabbit Polyclonal Antibody

#### Product data:

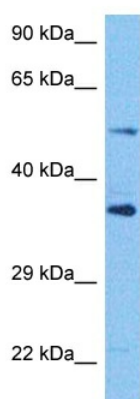
Product Type:	Primary Antibodies
Applications:	WB
Reactivity:	Human
Host:	Rabbit
Clonality:	Polyclonal
Immunogen:	The immunogen is a synthetic peptide directed towards the middle region of human SIM2
Specificity:	<b>Expected reactivity:</b> Human
Formulation:	Liquid. Purified antibody supplied in 1x PBS buffer with 0.09% (w/v) sodium azide and 2% sucrose. <i>Note that this product is shipped as lyophilized powder to China customers.</i>
Concentration:	lot specific
Purification:	Affinity purified
Conjugation:	Unconjugated
Storage:	For short term use, store at 2-8°C up to 1 week. For long term storage, store at -20°C in small aliquots to prevent freeze-thaw cycles.
Stability:	Shelf life: one year from despatch.
Predicted Protein Size:	73 kDa
Gene Name:	single-minded family bHLH transcription factor 2
Database Link:	<a href="#">NP_005060.1</a> <a href="#">Entrez Gene 6493 Human</a> <a href="#">Q14190</a>
Background:	This gene represents a homolog of the Drosophila single-minded (sim) gene, which encodes a transcription factor that is a master regulator of neurogenesis. The encoded protein is ubiquitinated by RING-IBR-RING-type E3 ubiquitin ligases, including the parkin RBR E3 ubiquitin protein ligase. This gene maps within the so-called Down syndrome chromosomal region, and is thus thought to contribute to some specific Down syndrome phenotypes. Alternative splicing of this gene results in multiple transcript variants.
Synonyms:	bHLHe15; MGC119447; SIM



[View online »](#)

Protein Families: Druggable Genome, Transcription Factors

### Product images:



Host: Rabbit  
Target Name: SIM2  
Sample Tissue: 293T Cell Lysate  
Antibody Dilution: 1.0 $\mu$ g/ml

Host: Rabbit  
Target Name: SIM2  
Sample Tissue: Human 293T Whole Cell  
Antibody Dilution: 1.0 $\mu$ g/ml