

Product datasheet for **TA360212**

Relaxin 2 (RLN2) Rabbit Polyclonal Antibody

Product data:

Product Type:	Primary Antibodies
Applications:	WB
Reactivity:	Human
Host:	Rabbit
Clonality:	Polyclonal
Immunogen:	The immunogen is a synthetic peptide directed towards the middle region of human RLN2
Specificity:	Expected reactivity: Human
Formulation:	Liquid. Purified antibody supplied in 1x PBS buffer with 0.09% (w/v) sodium azide and 2% sucrose. <i>Note that this product is shipped as lyophilized powder to China customers.</i>
Concentration:	lot specific
Purification:	Affinity purified
Conjugation:	Unconjugated
Storage:	For short term use, store at 2-8°C up to 1 week. For long term storage, store at -20°C in small aliquots to prevent freeze-thaw cycles.
Stability:	Shelf life: one year from despatch.
Predicted Protein Size:	21 kDa
Gene Name:	relaxin 2
Database Link:	NP_005050.2 Entrez Gene 6019 Human P04090



[View online »](#)

Background:

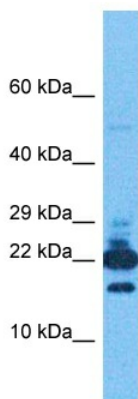
Relaxins are known endocrine and autocrine/paracrine hormones, belonging to the insulin gene superfamily. In humans there are three non-allelic relaxin genes, RLN1, RLN2 and RLN3, where RLN1 and RLN2 share high sequence homology. The active form of the protein encoded by this gene consists of an A chain and a B chain linked by disulfide bonds. Relaxin is produced by the ovary, and targets the mammalian reproductive system to ripen the cervix, elongate the pubic symphysis and inhibit uterine contraction. It may have additional roles in enhancing sperm motility, regulating blood pressure, controlling heart rate and releasing oxytocin and vasopressin. Alternative splicing of this gene results in multiple transcript variants.

Synonyms:

bA12D24.1.1; bA12D24.1.2; H2; RLXH2

Protein Families:

Secreted Protein

Product images:


Host: Rabbit
 Target Name: REL2
 Sample Tissue: 293T Cell Lysate
 Antibody Dilution: 1.0g/ml

Host: Rabbit
 Target Name: RLN2
 Sample Tissue: Human 293T Whole Cell
 Antibody Dilution: 1.0ug/ml