

## Product datasheet for **TA360205**

### Relaxin 1 (RLN1) Rabbit Polyclonal Antibody

#### Product data:

Product Type:	Primary Antibodies
Applications:	WB
Reactivity:	Human
Host:	Rabbit
Clonality:	Polyclonal
Immunogen:	The immunogen is a synthetic peptide directed towards the middle region of human RLN1
Specificity:	<b>Expected reactivity:</b> Human
Formulation:	Liquid. Purified antibody supplied in 1x PBS buffer with 0.09% (w/v) sodium azide and 2% sucrose. <i>Note that this product is shipped as lyophilized powder to China customers.</i>
Concentration:	lot specific
Purification:	Affinity purified
Conjugation:	Unconjugated
Storage:	For short term use, store at 2-8°C up to 1 week. For long term storage, store at -20°C in small aliquots to prevent freeze-thaw cycles.
Stability:	Shelf life: one year from despatch.
Predicted Protein Size:	21 kDa
Gene Name:	relaxin 1
Database Link:	<a href="#">NP_008842.1</a> <a href="#">Entrez Gene 6013 Human</a> <a href="#">P04808</a>



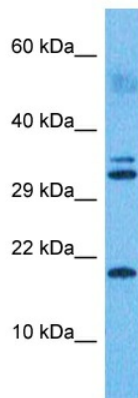
[View online »](#)

**Background:**

Relaxins are known endocrine and autocrine/paracrine hormones, belonging to the insulin gene superfamily. In humans there are three non-allelic relaxin genes, RLN1, RLN2 and RLN3, where RLN1 and RLN2 share high sequence homology. The protein encoded by this gene is synthesized as a single-chain polypeptide but the active form consists of an A chain and a B chain linked by disulfide bonds. Relaxin is produced by the ovary, and targets the mammalian reproductive system to ripen the cervix, elongate the pubic symphysis and inhibit uterine contraction. It may have additional roles in enhancing sperm motility, regulating blood pressure, controlling heart rate and releasing oxytocin and vasopressin.

**Synonyms:**

bA12D24.3.1; bA12D24.3.2; H1; prorelaxin; RLXH1

**Product images:**


Host: Rabbit  
 Target Name: REL1  
 Sample Tissue: 293T Cell Lysate  
 Antibody Dilution: 1.0g/ml

Host: Rabbit  
 Target Name: RLN1  
 Sample Tissue: Human 293T Whole Cell  
 Antibody Dilution: 1.0ug/ml