

Product datasheet for **TA360204**

RHCE Rabbit Polyclonal Antibody

Product data:

Product Type:	Primary Antibodies
Applications:	WB
Reactivity:	Human
Host:	Rabbit
Clonality:	Polyclonal
Immunogen:	The immunogen is a synthetic peptide directed towards the middle region of human RHCE
Specificity:	Expected reactivity: Human
Formulation:	Liquid. Purified antibody supplied in 1x PBS buffer with 0.09% (w/v) sodium azide and 2% sucrose. <i>Note that this product is shipped as lyophilized powder to China customers.</i>
Concentration:	lot specific
Purification:	Affinity purified
Conjugation:	Unconjugated
Storage:	For short term use, store at 2-8°C up to 1 week. For long term storage, store at -20°C in small aliquots to prevent freeze-thaw cycles.
Stability:	Shelf life: one year from despatch.
Predicted Protein Size:	46 kDa
Gene Name:	Rh blood group CcEe antigens
Database Link:	NP_065231.3 Entrez Gene 6006 Human P18577



[View online »](#)

Background:

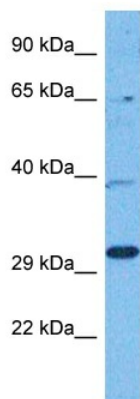
The Rh blood group system is the second most clinically significant of the blood groups, second only to ABO. It is also the most polymorphic of the blood groups, with variations due to deletions, gene conversions, and missense mutations. The Rh blood group includes this gene which encodes both the RhC and RhE antigens on a single polypeptide and a second gene which encodes the RhD protein. The classification of Rh-positive and Rh-negative individuals is determined by the presence or absence of the highly immunogenic RhD protein on the surface of erythrocytes. A mutation in this gene results in amorph-type Rh-null disease. Alternative splicing of this gene results in four transcript variants encoding four different isoforms.

Synonyms:

CD240CE; MGC103977; RH; Rh4; Rh30A; RHC; RHE; RhIVb(j); RHIXB; RHPI; RhVI; RhVIII

Protein Families:

Transmembrane

Product images:

Host: Rabbit
Target Name: RHCE
Sample Tissue: Stomach Tumor Lysate
Antibody Dilution: 1.0µg/ml

Host: Rabbit
Target Name: RHCE
Sample Tissue: Human Stomach Tumor
Antibody Dilution: 1.0ug/ml