

Product datasheet for **TA360203**

RAP1B Rabbit Polyclonal Antibody

Product data:

| | |
|-------------------------|--|
| Product Type: | Primary Antibodies |
| Applications: | WB |
| Reactivity: | Human |
| Host: | Rabbit |
| Clonality: | Polyclonal |
| Immunogen: | The immunogen is a synthetic peptide directed towards the C terminal region of human RAP1B |
| Specificity: | Expected reactivity: Human |
| Formulation: | Liquid. Purified antibody supplied in 1x PBS buffer with 0.09% (w/v) sodium azide and 2% sucrose. <i>Note that this product is shipped as lyophilized powder to China customers.</i> |
| Concentration: | lot specific |
| Purification: | Affinity purified |
| Conjugation: | Unconjugated |
| Storage: | For short term use, store at 2-8°C up to 1 week. For long term storage, store at -20°C in small aliquots to prevent freeze-thaw cycles. |
| Stability: | Shelf life: one year from despatch. |
| Predicted Protein Size: | 21 kDa |
| Gene Name: | RAP1B, member of RAS oncogene family |
| Database Link: | NP_001010942.1 Entrez Gene 5908 Human P61224 |
| Background: | This gene encodes a member of the RAS-like small GTP-binding protein superfamily. Members of this family regulate multiple cellular processes including cell adhesion and growth and differentiation. This protein localizes to cellular membranes and has been shown to regulate integrin-mediated cell signaling. This protein also plays a role in regulating outside-in signaling in platelets. Alternate splicing results in multiple transcript variants. Pseudogenes of this gene are found on chromosomes 3, 5, 6 and 9. |



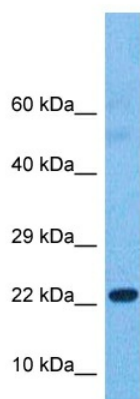
[View online »](#)

Synonyms: DKFZp586H0723; K-REV; RAL1B

Protein Families: Druggable Genome

Protein Pathways: Chemokine signaling pathway, Focal adhesion, Leukocyte transendothelial migration, Long-term potentiation, MAPK signaling pathway, Neurotrophin signaling pathway, Renal cell carcinoma

Product images:



Host: Rabbit
Target Name: RAP1B
Sample Tissue: Stomach Tumor Lysate
Antibody Dilution: 1.0 μ g/ml

Host: Rabbit
Target Name: RAP1B
Sample Tissue: Human Stomach Tumor
Antibody Dilution: 1.0 μ g/ml