

Product datasheet for **TA360202**

RAB6A Rabbit Polyclonal Antibody

Product data:

Product Type:	Primary Antibodies
Applications:	WB
Reactivity:	Human, Mouse
Host:	Rabbit
Clonality:	Polyclonal
Immunogen:	The immunogen is a synthetic peptide directed towards the C terminal region of human RAB6A
Specificity:	Expected reactivity: Human
Formulation:	Liquid. Purified antibody supplied in 1x PBS buffer with 0.09% (w/v) sodium azide and 2% sucrose. <i>Note that this product is shipped as lyophilized powder to China customers.</i>
Concentration:	lot specific
Purification:	Affinity purified
Conjugation:	Unconjugated
Storage:	For short term use, store at 2-8°C up to 1 week. For long term storage, store at -20°C in small aliquots to prevent freeze-thaw cycles.
Stability:	Shelf life: one year from despatch.
Predicted Protein Size:	24 kDa
Gene Name:	RAB6A, member RAS oncogene family
Database Link:	NP_001230647.1 Entrez Gene 19346 Mouse Entrez Gene 5870 Human P20340



[View online »](#)

Background:

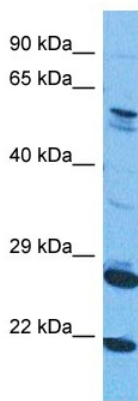
This gene encodes a member of the RAB family, which belongs to the small GTPase superfamily. GTPases of the RAB family bind to various effectors to regulate the targeting and fusion of transport carriers to acceptor compartments. This protein is located at the Golgi apparatus, which regulates trafficking in both a retrograde (from early endosomes and Golgi to the endoplasmic reticulum) and an anterograde (from the Golgi to the plasma membrane) directions. Myosin II is an effector of this protein in these processes. This protein is also involved in assembly of human cytomegalovirus (HCMV) by interacting with the cellular protein Bicaudal D1, which interacts with the HCMV virion tegument protein, pp150. Multiple alternatively spliced transcript variants encoding different isoforms have been identified.

Synonyms:

Rab-6; RAB6; RAB6B

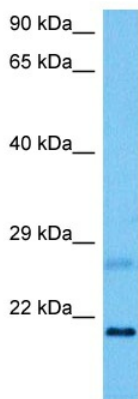
Protein Families:

Druggable Genome

Product images:


Host: Rabbit
 Target Name: RAB6A
 Sample Tissue: HepG2 Cell Lysate
 Antibody Dilution: 1.0µg/ml

Host: Rabbit
 Target Name: RAB6A
 Sample Tissue: Human HepG2 Whole Cell
 Antibody Dilution: 1.0ug/ml



Host: Rabbit
 Target Name: Rab6a
 Sample Type: Mouse Heart Lysate
 Antibody Dilution: 1.0µg/ml

Host: Mouse
 Target Name: RAB6A
 Sample Tissue: Mouse Heart
 Antibody Dilution: 1ug/ml